

Greater West Bloomfield Historical Society

2008 in Review

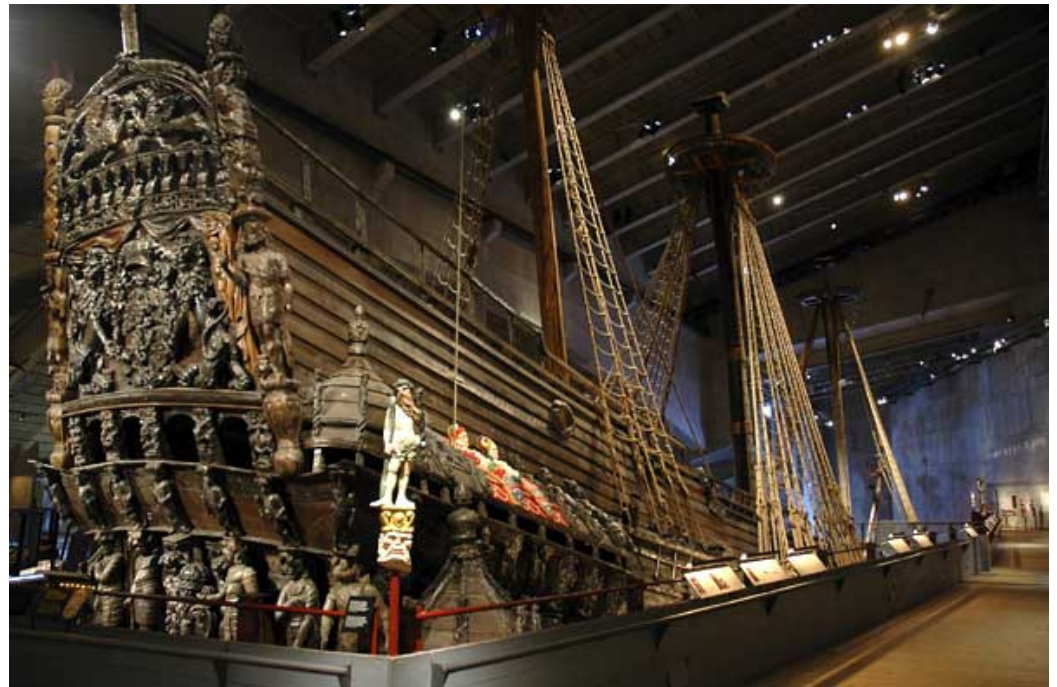
Wednesday, October 22, 2008

Sylvan Lake Community Center



Greater West Bloomfield Historical Society

Vasa Museum – Stockholm



City of Orchard Lake Village 80th Anniversary

- April Museum Open House
- Rich Bartus presentation on Leroy Pelletier
- Filmed by TV15



Michigan Week Breakfast

Bay Pointe Country Club



Michigan Week 2008
Great Lakes, Great Traditions

Calendar of Events Community Awards Breakfast Award Recipients Read Michigan MI Week State Web Site Home

Greater West Bloomfield Michigan Week 2008

**Community Awards Breakfast
May 16, 2008**

Greater West Bloomfield salutes those who have made significant volunteer contributions to the community. [Join us.](#)

**Celebrate Michigan!
May is Michigan Month in
Greater West Bloomfield**

City of Keego Harbor
City of Sylvan Lake

City of Orchard Lake Village
Township of West Bloomfield

Bloomfield Hills Schools
Walled Lake Schools

West Bloomfield Schools

Website by the [West Bloomfield Township Public Library](#).
Comments? Contact: [Webmaster](#)

Books to Schools

- Three GWBHS members served on the organizing committee
- Two GWBHS tables
- 225 Song of the Heron books & membership applications in the gift bags
- 36 Song of the Heron books given to area schools



Michigan Week Tours



305 Visitors

- 3rd weekend in May
- 305 visitors over 2 days
- 60% adults 40% children



Island of Time Apple Island Tours



Greater West Bloomfield Historical Society

EMF Auto Company 100th Anniversary

- Flanders Garage
- Dedication of the State historical marker
- Filmed by TV15



Sylvan Lake Ice Cream Social



Donated Photo

- Dedication of the new Community Center
- GWBHS Donated Framed Fresh Air Camp Photo



Gino's Pre-Cruise

- GWBHS Tent
- Antique Outboard Motor Display



Teaching Inquiry Based Science (TIBS)



University Credit

- Professional development course for teachers
- Course development funded by GWBHS
- 1st class August, 2008
- Graduate, undergraduate and continuing education credits offered through Madonna University



Archeological Dig Synopsis

It is currently impossible to determine how often or for how long the site was occupied by American Indians or exactly when this may have occurred. It is most likely that the site area was one of the many local archaeological sites various American Indian groups used casually and ephemerally during the 15th or 16th or even the early 17th century and then occupied again, possibly by very different peoples, some time around the last half of the 18th or the early 19th century. But it is also possible that 200K52/476 is one of those extremely rare sites occupied between 1625 AD and 1725 AD when both aboriginal stone-working and ceramic manufacturing technologies and European trade co-existed. Only carefully planned and executed archaeological excavation and professional analyses documenting undisturbed deposits can determine the facts regarding the potential importance of this site on Apple Island.

David Brose, Ph.D., Registered Professional Archaeologist



Greater West Bloomfield Historical Society

“Pontiac’s Mound”

In my judgment, "Pontiac's Mound" appears to be only one of several rather level promontories extending without discernable interruption from the central plateau of the island toward northwestern shore. While additional deep testing may reveal other information, at this time the most appropriate hypothesis is to regard all of these adjacent landforms as non-cultural portions of the higher soils, dissected by centuries [if not millennia] of natural headward erosion and downslope weathering.

David Brose, Ph.D., Registered Professional Archaeologist



Elementary School Apple Island Tours



640 Visitors

- 11 days
- 640 Students
- 2nd grade students
West Bloomfield
School District
- 7 members involved



Student Tour Lesson Plans & Flipcharts

What would I need
to live on Apple Island?

How would I provide
these needs if I was a...

Native American

Farmer

Vacationer

Suburbanite

2

Michigan Benchmarks

- Linked to Michigan Benchmarks for Early Elementary
- Museum collection is presented in a chronological, geographic and social perspective



Group Trips



Private Tours

- Girl Scout Troop walking tour of the MMA
- Bloomfield Seniors Apple Island tour
- Oakland Township Historical Society luncheon, MMA walking tour and Apple Island tour



Other Group Presentations

- 3-Sister's Garden
- Northeast Oakland Township Historical Societies
- Library History Y's
- Changing Communities – Eastover Elementary School
- Optimist Club of West Bloomfield



Fall Fundraiser



\$560

- Rummage Sale
- 2-days
- Raised \$560



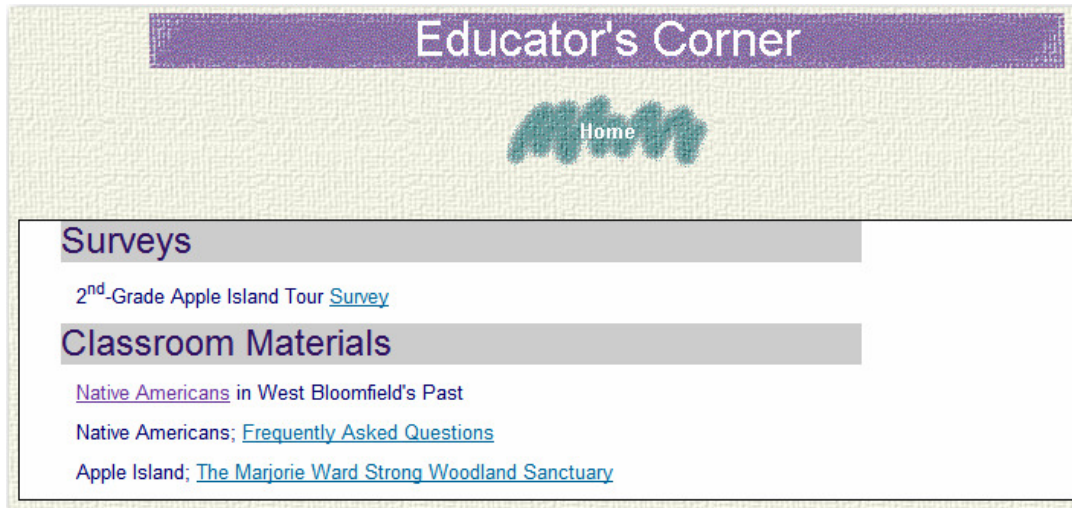
Greater West Bloomfield Historical Society

Off-site Displays

- West Bloomfield Township Hall
- City of Orchard Lake
- Sylvan Lake Ice Cream Social
- Gino's Pre-Cruise



GWBHS Website & Virtual Exhibits



39693 Number of Visitors Since November 17, 2000:

19 Hits a Day

- “Educator’s Corner
- Online Surveys
- Averaging 19 visitors each day



Greater West Bloomfield Historical Society

2008 Membership

<u>Member Type</u>	<u>Amount</u>	<u>Count</u>	<u>Extended</u>
Community	NA	2	\$185
Contributing	\$30	1	30
Family	\$30	22	660
Individual	\$20	31	620
Patron/Business	\$100	9	900
Premier	\$50	9	450
Senior	\$15	<u>34</u>	<u>510</u>
		108	\$3,355



2008 Community Support

<u>Municipality</u>	<u>Extended</u>
Keego Harbor	\$200
Orchard Lake	Museum
Sylvan Lake	500
Countryside Imp. Assoc.	175
West Bloomfield Township	<u>5,000</u>
	\$5,875



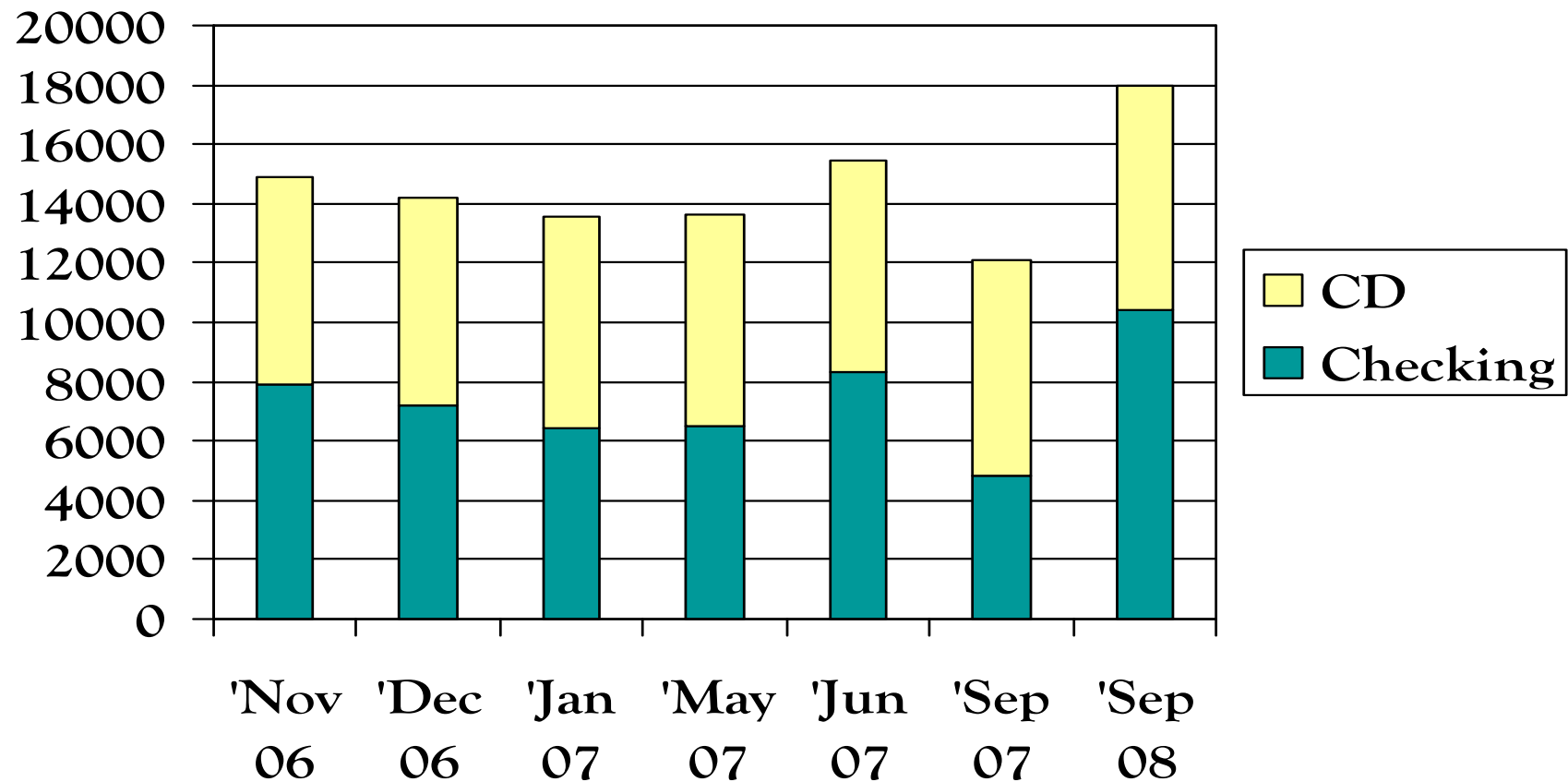
2008 Actual – 2009 Budget

Greater West Bloomfield Historical Society
2009 Budget Proposal
For the Period October 1, 2008 Through September 30, 2009

Revenue	<u>2008 Actual</u>	<u>2009 Budget</u>
Membership	\$3,140	\$3,700
Community Support	5,285	5,550
Memorials	1,000	0
Grants	0	900
Programs	3,402	5,050
Museum Store (Net)	1,605	750
General Donations	448	500
Fundraising	1,466	1,500
Miscellaneous Revenue	<u>910</u>	<u>0</u>
	\$17,256	\$17,950
 Expenses		
Membership Development	\$230	\$1,000
Museum Expense	7,437	8,450
Other Program Expense	5,239	7,400
Museum Store Expenses	98	200
Administrative	304	700
Fundraising Expense	<u>225</u>	<u>200</u>
	\$13,533	\$17,950
 Net Income	<u>\$3,723</u>	<u>\$0</u>



Cash Position



Plans for 2009

- Orchard Lake St. Mary's 100th and 125th Anniversaries
- Rotated Museum Displays
- Market Group Tours of Apple Island and the Michigan Military Academy
- Continuation of the TIBS Course



Election of Board Officers

- Three-year term ending in 2011
 - Cara Kazanowski
 - Helen Jane Peters

