



Roosevelt Elementary School

Our School History



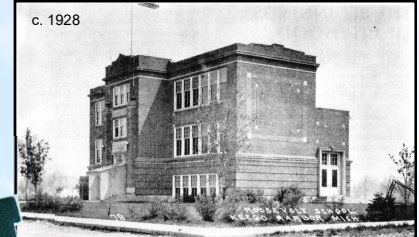
Public education found a foot-hold in the Keego Harbor area in 1914 with the construction of Keego Harbor School at the corner of Pridham Street and Orchard Lake Road, on land donated by Joseph Sawyer. The two-room school boasted of indoor plumbing, unusual for the day. Grades first through eighth were taught there for several years until increasing enrollment created the need for a larger school. Even after Roosevelt School was built, Keego Harbor School was used for overflow classrooms, and later served as a community building until it was razed in 1963.

Roosevelt School, named President Theodore Roosevelt, opened in 1920 in the Evergreen Villa subdivision, serving kindergarten through tenth grade in six classrooms. Grades eleven and twelve were added in subsequent years. The high school graduating Class of 1929 included five students.

Over the years, many additions and renovations allowed Roosevelt to adapt to increasing enrollment and technology advancements. Roosevelt has also been the site of educational innovations including the district's first Head Start program (1965), the district's Magnet program for academically-gifted students (1978), the district's first all-day kindergarten (1996), and the district's first STEAM campus (2015).



Theodore Roosevelt



Kindergarten class, 1949



Learning by filmstrip and record-player, 1969



Roosevelt High School had a long-history of athletic success for both boys and girls. Teams competed as the Roosevelt Presidents but identified themselves as "Keego Harbor" on their letter sweaters and in yearbooks.



Magnet multi-age classroom, 1978

During its years as a high school, Roosevelt's athletic field was located on Summers Street, about a mile from the school. Controversy erupted in 1972 when the land was sold by the School Board to a developer. Many in the Keego Harbor community thought the land should have been kept for community use.



Community playground rebuilding project draws over 400 volunteers, 1996



Major renovations move lunchtime from the gymnasium to new multi-purpose room, 2002

Roosevelt housed kindergarten through sixth grade after the new high school was built at the corner of Orchard Lake and Commerce Roads in 1955. With the move to a "6-8" middle school model in 1971, Roosevelt transitioned to preschool through fifth grade.



School bell, attributed to Keego Harbor School, restored and mounted outside Roosevelt, 2015



"Roosevelt Remembers" historic exhibit installed in celebration of school's 85th anniversary, 2005



PRINCIPALS

A. G. NEWMAN
WARREN W. ABBOTT
CARL BIEFELD
DONALD WEED
GERTRUDE V. EALY
ROGER GARVELINK
NORMAN C. KATNER
WILLIAM FLOTO
RAYMOND A. YOUNG
EVELYN HILL
CHERYL FLAMMER
DR. PAUL LIPSON
THOMAS SHELTON
DR. STEVEN PALMER
DR. BETH FEITEN
ARTHUR EBERT
DENNIS RAPAL



Roosevelt is transformed into district's first STEAM campus, 2015



Exhibit funded by the PTOs of West Bloomfield School District (WBSD). Research funded by the Greater West Bloomfield Historical Society (GWBHS). Historical materials, additional research, and design provided by WBSD, GWBHS, and members of the community.

www.wbsd.org www.gwbhs.org 2016

