



Apple Island Exploration



From the 1850s to the 1940s, a group of families headed by Colin and Caroline Campbell had summer cottages on Apple Island. Just like when we go “Up North”, the vacationers of long ago came to Apple Island for relaxation, quiet, and outdoor enjoyment away from the busy-ness of the city. The Campbell children, John, Jessie, Forrest, Jeanie, and Caroline played in the woods, swam in the lake, and tended to the gardens. Their family and friends spent over 60 summers on the island. When the cottages were eventually abandoned, left behind were walls and bricks, the foundations, and even the family trash. This is an actual artifact discovered on Apple Island in the family “privy”. Can this spark your imagination?



Material	Glass
Color	Rose
Size	1.75" diameter
ID	Ai-privy-2020-01

What do you think this might be?

How do you think the Campbells might have used this item?

How did it get broken?

Can you draw what it might have looked like when it was new?

Are there marks on this item that give a clue to its original use?

Use your imagination and creativity! Tell a story, write a poem, draw a picture.

When you are finished, and with your parent’s permission, use this [form](https://forms.gle/LYAs2wFEuQfmM7Vr8) to upload your worksheet to the historical society. The Greater West Bloomfield Historical Society would like to share your creativity with others at the Orchard Lake museum or online. Contact cory@gwbhs.org if you have any problems uploading.

The Ward-Strong family donated the island to the West Bloomfield School District in 1970, and it was dedicated as the Marjorie Ward Strong Woodland Sanctuary. Learn more about Apple Island and local history at www.gwbhs.org.



Apple Island Exploration



From the 1850s to the 1940s, a group of families headed by Colin and Caroline Campbell had summer cottages on Apple Island. Just like when we go “Up North”, the vacationers of long ago came to Apple Island for relaxation, quiet, and outdoor enjoyment away from the busy-ness of the city. The Campbell children, John, Jessie, Forrest, Jeanie, and Caroline played in the woods, swam in the lake, and tended to the gardens. Their family and friends spent over 60 summers on the island. When the cottages were eventually abandoned, left behind were walls and bricks, the foundations, and even the family trash. This is an actual artifact discovered on Apple Island in the family “privy”. Can this spark your imagination?



Material	Wood
Color	Brown
Size	3.5" w x 4" h x 1" d
ID	Ai-privy-2020-02

What do you think this might be?

How do you think the Campbells might have used this item?

How did it get broken?

Can you draw what it might have looked like when it was new?

Are there marks on this item that give a clue to its original use?

**Use your imagination and creativity!
Tell a story, write a poem, draw a picture.**

When you are finished, and with your parent’s permission, use this [form](https://forms.gle/LYAs2wFEuQfmM7Vr8) to upload your worksheet to the historical society. The Greater West Bloomfield Historical Society would like to share your creativity with others at the Orchard Lake museum or online.

The Ward-Strong family donated the island to the West Bloomfield School District in 1970, and it was dedicated as the Marjorie Ward Strong Woodland Sanctuary. Learn more about Apple Island and local history at www.gwbhs.org.



Apple Island Exploration



From the 1850s to the 1940s, a group of families headed by Colin and Caroline Campbell had summer cottages on Apple Island. Just like when we go “Up North”, the vacationers of long ago came to Apple Island for relaxation, quiet, and outdoor enjoyment away from the busy-ness of the city. The Campbell children, John, Jessie, Forrest, Jeanie, and Caroline played in the woods, swam in the lake, and tended to the gardens. Their family and friends spent over 60 summers on the island. When the cottages were eventually abandoned, left behind were walls and bricks, the foundations, and even the family trash. This is an actual artifact discovered on Apple Island in the family “privy”. Can this spark your imagination?



Material	Metal (Tin?)
Color	Silver
Size	Approx. 3” diameter
ID	Ai-privy-2020-03

What do you think this might be?

How do you think the Campbells might have used this item?

How did it get broken?

Can you draw what it might have looked like when it was new?

Are there marks on this item that give a clue to its original use?

Use your imagination and creativity! Tell a story, write a poem, draw a picture.

When you are finished, and with your parent’s permission, use this [form](https://forms.gle/LYAs2wFEuQfmM7Vr8) to upload your worksheet to the historical society. The Greater West Bloomfield Historical Society would like to share your creativity with others at the Orchard Lake museum or online.

The Ward-Strong family donated the island to the West Bloomfield School District in 1970, and it was dedicated as the Marjorie Ward Strong Woodland Sanctuary. Learn more about Apple Island and local history at www.gwbhs.org.



Apple Island Exploration



From the 1850s to the 1940s, a group of families headed by Colin and Caroline Campbell had summer cottages on Apple Island. Just like when we go “Up North”, the vacationers of long ago came to Apple Island for relaxation, quiet, and outdoor enjoyment away from the busy-ness of the city. The Campbell children, John, Jessie, Forrest, Jeanie, and Caroline played in the woods, swam in the lake, and tended to the gardens. Their family and friends spent over 60 summers on the island. When the cottages were eventually abandoned, left behind were walls and bricks, the foundations, and even the family trash. This is an actual artifact discovered on Apple Island in the family “privy”. Can this spark your imagination?



Material	Metal
Color	Rusted
Size	3" L x 1.5" W
ID	Ai-privy-2020-04

What do you think this might be?

How do you think the Campbells might have used this item?

How did it get broken?

Can you draw what it might have looked like when it was new?

Are there marks on this item that give a clue to its original use?

**Use your imagination and creativity!
Tell a story, write a poem, draw a picture.**

When you are finished, and with your parent’s permission, use this [form](https://forms.gle/LYAs2wFEuQfmM7Vr8) <https://forms.gle/LYAs2wFEuQfmM7Vr8> to upload your worksheet to the historical society. The Greater West Bloomfield Historical Society would like to share your creativity with others at the Orchard Lake museum or online.

The Ward-Strong family donated the island to the West Bloomfield School District in 1970, and it was dedicated as the Marjorie Ward Strong Woodland Sanctuary. Learn more about Apple Island and local history at www.gwbhs.org.



Apple Island Exploration



From the 1850s to the 1940s, a group of families headed by Colin and Caroline Campbell had summer cottages on Apple Island. Just like when we go “Up North”, the vacationers of long ago came to Apple Island for relaxation, quiet, and outdoor enjoyment away from the busy-ness of the city. The Campbell children, John, Jessie, Forrest, Jeanie, and Caroline played in the woods, swam in the lake, and tended to the gardens. Their family and friends spent over 60 summers on the island. When the cottages were eventually abandoned, left behind were walls and bricks, the foundations, and even the family trash. This is an actual artifact discovered on Apple Island in the cellar of the Caretaker’s home. Can this spark your imagination?



Material	Metal
Color	Rusted
Size	10” H x 4” W
ID	Caretaker Cellar-2020-05

What do you think this might be?

How do you think the family might have used this item?

How did it get broken?

Can you draw what it might have looked like when it was new?

Are there marks on this item that give a clue to its original use?

**Use your imagination and creativity!
Tell a story, write a poem, draw a picture.**

When you are finished, and with your parent’s permission, use this [form](https://forms.gle/LYAs2wFEuQfmM7Vr8) to upload your worksheet to the historical society. The Greater West Bloomfield Historical Society would like to share your creativity with others at the Orchard Lake museum or online.

The Ward-Strong family donated the island to the West Bloomfield School District in 1970, and it was dedicated as the Marjorie Ward Strong Woodland Sanctuary. Learn more about Apple Island and local history at www.gwbhs.org.



Apple Island Exploration



From the 1850s to the 1940s, a group of families headed by Colin and Caroline Campbell had summer cottages on Apple Island. Just like when we go “Up North”, the vacationers of long ago came to Apple Island for relaxation, quiet, and outdoor enjoyment away from the busy-ness of the city. The Campbell children, John, Jessie, Forrest, Jeanie, and Caroline played in the woods, swam in the lake, and tended to the gardens. Their family and friends spent over 60 summers on the island. When the cottages were eventually abandoned, left behind were walls and bricks, the foundations, and even the family trash. This is an actual artifact discovered on Apple Island in the family “privy”. Can this spark your imagination?



Material	China/porcelain
Color	Cream w blue decoration
Size	Approx. 1" x 2"
ID	Ai-privy-2020-06

What do you think this might be?

How do you think the Campbells might have used this item?

How did it get broken?

Can you draw what it might have looked like when it was new?

Are there marks on this item that give a clue to its original use?

**Use your imagination and creativity!
Tell a story, write a poem, draw a picture.**

When you are finished, and with your parent’s permission, use this [form](https://forms.gle/LYAs2wFEuQfmM7Vr8) to upload your worksheet to the historical society. The Greater West Bloomfield Historical Society would like to share your creativity with others at the Orchard Lake museum or online.

The Ward-Strong family donated the island to the West Bloomfield School District in 1970, and it was dedicated as the Marjorie Ward Strong Woodland Sanctuary. Learn more about Apple Island and local history at www.gwbhs.org.



Apple Island Exploration



From the 1850s to the 1940s, a group of families headed by Colin and Caroline Campbell had summer cottages on Apple Island. Just like when we go “Up North”, the vacationers of long ago came to Apple Island for relaxation, quiet, and outdoor enjoyment away from the busy-ness of the city. The Campbell children, John, Jessie, Forrest, Jeanie, and Caroline played in the woods, swam in the lake, and tended to the gardens. Their family and friends spent over 60 summers on the island. When the cottages were eventually abandoned, left behind were walls and bricks, the foundations, and even the family trash. This is an actual artifact discovered on Apple Island in the family “privy”. Can this spark your imagination?



Material	Glass/crystal
Color	clear
Size	Approx. 2" x 2" diameter
ID	Ai-privy-2020-07

What do you think this might be?

How do you think the Campbells might have used this item?

How did it get broken?

Can you draw what it might have looked like when it was new?

Are there marks on this item that give a clue to its original use?

**Use your imagination and creativity!
Tell a story, write a poem, draw a picture.**

When you are finished, and with your parent’s permission, use this [form](https://forms.gle/LYAs2wFEuQfmM7Vr8) to upload your worksheet to the historical society. The Greater West Bloomfield Historical Society would like to share your creativity with others at the Orchard Lake museum or online.

The Ward-Strong family donated the island to the West Bloomfield School District in 1970, and it was dedicated as the Marjorie Ward Strong Woodland Sanctuary. Learn more about Apple Island and local history at www.gwbhs.org.



Apple Island Exploration



From the 1850s to the 1940s, a group of families headed by Colin and Caroline Campbell had summer cottages on Apple Island. Just like when we go “Up North”, the vacationers of long ago came to Apple Island for relaxation, quiet, and outdoor enjoyment away from the busy-ness of the city. The Campbell children, John, Jessie, Forrest, Jeanie, and Caroline played in the woods, swam in the lake, and tended to the gardens. Their family and friends spent over 60 summers on the island. When the cottages were eventually abandoned, left behind were walls and bricks, the foundations, and even the family trash. This is an actual artifact discovered on Apple Island in the family “privy”. Can this spark your imagination?



Material	Glass
Color	Clear
Size	Approx. 2.5"W x 6" L
ID	Ai-forrest-2017-08

What do you think this might be?

How do you think the Campbells might have used this item?

Why was it discarded?

Can you draw what it might have looked like when it was new?

Are there marks on this item that give a clue to its original use?

**Use your imagination and creativity!
Tell a story, write a poem, draw a picture.**

When you are finished, and with your parent’s permission, use this [form](https://forms.gle/LYAs2wFEuQfmM7Vr8) to upload your worksheet to the historical society. The Greater West Bloomfield Historical Society would like to share your creativity with others at the Orchard Lake museum or online.

The Ward-Strong family donated the island to the West Bloomfield School District in 1970, and it was dedicated as the Marjorie Ward Strong Woodland Sanctuary. Learn more about Apple Island and local history at www.gwbhs.org.



Apple Island Exploration



From the 1850s to the 1940s, a group of families headed by Colin and Caroline Campbell had summer cottages on Apple Island. Just like when we go “Up North”, the vacationers of long ago came to Apple Island for relaxation, quiet, and outdoor enjoyment away from the busy-ness of the city. The Campbell children, John, Jessie, Forrest, Jeanie, and Caroline played in the woods, swam in the lake, and tended to the gardens. Their family and friends spent over 60 summers on the island. When the cottages were eventually abandoned, left behind were walls and bricks, the foundations, and even the family trash. This is an actual artifact discovered on Apple Island in the family “privy”. Can this spark your imagination?



Material	Metal
Color	Rusted
Size	8” H x 7” W
ID	Ai-privy-2020-09

What do you think this might be?

How do you think the Campbells might have used this item?

How did it get broken?

Can you draw what it might have looked like when it was new?

Are there marks on this item that give a clue to its original use?

**Use your imagination and creativity!
Tell a story, write a poem, draw a picture.**

When you are finished, and with your parent’s permission, use this [form](https://forms.gle/LYAs2wFEuQfmM7Vr8) to upload your worksheet to the historical society. The Greater West Bloomfield Historical Society would like to share your creativity with others at the Orchard Lake museum or online.

The Ward-Strong family donated the island to the West Bloomfield School District in 1970, and it was dedicated as the Marjorie Ward Strong Woodland Sanctuary. Learn more about Apple Island and local history at www.gwbhs.org.



Apple Island Exploration



From the 1850s to the 1940s, a group of families headed by Colin and Caroline Campbell had summer cottages on Apple Island. Just like when we go “Up North”, the vacationers of long ago came to Apple Island for relaxation, quiet, and outdoor enjoyment away from the busy-ness of the city. The Campbell children, John, Jessie, Forrest, Jeanie, and Caroline played in the woods, swam in the lake, and tended to the gardens. Their family and friends spent over 60 summers on the island. When the cottages were eventually abandoned, left behind were walls and bricks, the foundations, and even the family trash. This is an actual artifact discovered on Apple Island in the family “privy”. Can this spark your imagination?



Material	Metal
Color	Rusted
Size	3” W x 14” L
ID	Ai-privy-2020-10

What do you think this might be?

How do you think the Campbells might have used this item?

How did it get broken?

Can you draw what it might have looked like when it was new?

Are there marks on this item that give a clue to its original use?

**Use your imagination and creativity!
Tell a story, write a poem, draw a picture.**

When you are finished, and with your parent’s permission, use this [form](https://forms.gle/LYAs2wFEuQfmM7Vr8) to upload your worksheet to the historical society. The Greater West Bloomfield Historical Society would like to share your creativity with others at the Orchard Lake museum or online.

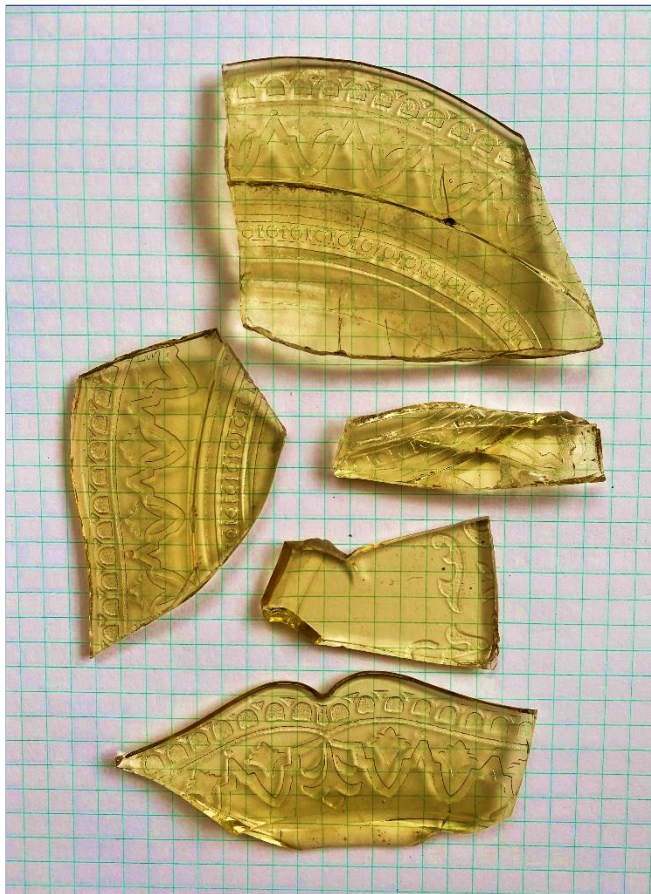
The Ward-Strong family donated the island to the West Bloomfield School District in 1970, and it was dedicated as the Marjorie Ward Strong Woodland Sanctuary. Learn more about Apple Island and local history at www.gwbhs.org.



Apple Island Exploration



From the 1850s to the 1940s, a group of families headed by Colin and Caroline Campbell had summer cottages on Apple Island. Just like when we go “Up North”, the vacationers of long ago came to Apple Island for relaxation, quiet, and outdoor enjoyment away from the busy-ness of the city. The Campbell children, John, Jessie, Forrest, Jeanie, and Caroline played in the woods, swam in the lake, and tended to the gardens. Their family and friends spent over 60 summers on the island. When the cottages were eventually abandoned, left behind were walls and bricks, the foundations, and even the family trash. This is an actual artifact discovered on Apple Island in the family “privy”. Can this spark your imagination?



Material	Glass
Color	Clear Yellow
Size	Varies (1/4" grid)
ID	Ai-privy-2020-11

What do you think this might be?

How do you think the Campbells might have used this item?

How did it get broken?

Can you draw what it might have looked like when it was new?

Are there marks on this item that give a clue to its original use?

Use your imagination and creativity! Tell a story, write a poem, draw a picture.

When you are finished, and with your parent’s permission, use this [form](https://forms.gle/LYAs2wFEuQfmM7Vr8) to upload your worksheet to the historical society. The Greater West Bloomfield Historical Society would like to share your creativity with others at the Orchard Lake museum or online.

The Ward-Strong family donated the island to the West Bloomfield School District in 1970, and it was dedicated as the Marjorie Ward Strong Woodland Sanctuary. Learn more about Apple Island and local history at www.gwbhs.org.



Apple Island Exploration



From the 1850s to the 1940s, a group of families headed by Colin and Caroline Campbell had summer cottages on Apple Island. Just like when we go “Up North”, the vacationers of long ago came to Apple Island for relaxation, quiet, and outdoor enjoyment away from the busy-ness of the city. The Campbell children, John, Jessie, Forrest, Jeanie, and Caroline played in the woods, swam in the lake, and tended to the gardens. Their family and friends spent over 60 summers on the island. When the cottages were eventually abandoned, left behind were walls and bricks, the foundations, and even the family trash. This is an actual artifact discovered on Apple Island in the family “privy”. Can this spark your imagination?



Material	Glass and metal
Color	Clear w yellow substance inside
Size	3.5” H x 2” W
ID	Ai-privy-2020-12

What do you think this might be?

What do you think is inside?

How do you think the Campbells might have used this item?

How did it get broken?

Can you draw what it might have looked like when it was new?

Are there marks on this item that give a clue to its original use?

Use your imagination and creativity! Tell a story, write a poem, draw a picture.

When you are finished, and with your parent’s permission, use this [form](https://forms.gle/LYAs2wFEuQfmM7Vr8) to upload your worksheet to the historical society. The Greater West Bloomfield Historical Society would like to share your creativity with others at the Orchard Lake museum or online.

The Ward-Strong family donated the island to the West Bloomfield School District in 1970, and it was dedicated as the Marjorie Ward Strong Woodland Sanctuary. Learn more about Apple Island and local history at www.gwbhs.org.



Apple Island Exploration



From the 1850s to the 1940s, a group of families headed by Colin and Caroline Campbell had summer cottages on Apple Island. Just like when we go “Up North”, the vacationers of long ago came to Apple Island for relaxation, quiet, and outdoor enjoyment away from the busy-ness of the city. The Campbell children, John, Jessie, Forrest, Jeanie, and Caroline played in the woods, swam in the lake, and tended to the gardens. Their family and friends spent over 60 summers on the island. When the cottages were eventually abandoned, left behind were walls and bricks, the foundations, and even the family trash. This is an actual artifact discovered on Apple Island in the family “privy”. Can this spark your imagination?



Material	Glass
Color	Clear
Size	Approx. 4" diam
ID	Ai-privy-2020-13

What do you think this might be?

How do you think the Campbells might have used this item?

How did it get broken?

Can you draw what it might have looked like when it was new?

Are there marks on this item that give a clue to its original use?

Use your imagination and creativity! Tell a story, write a poem, draw a picture.

When you are finished, and with your parent’s permission, use this [form](https://forms.gle/LYAs2wFEuQfmM7Vr8) to upload your worksheet to the historical society. The Greater West Bloomfield Historical Society would like to share your creativity with others at the Orchard Lake museum or online.

The Ward-Strong family donated the island to the West Bloomfield School District in 1970, and it was dedicated as the Marjorie Ward Strong Woodland Sanctuary. Learn more about Apple Island and local history at www.gwbhs.org.



Apple Island Exploration



From the 1850s to the 1940s, a group of families headed by Colin and Caroline Campbell had summer cottages on Apple Island. Just like when we go “Up North”, the vacationers of long ago came to Apple Island for relaxation, quiet, and outdoor enjoyment away from the busy-ness of the city. The Campbell children, John, Jessie, Forrest, Jeanie, and Caroline played in the woods, swam in the lake, and tended to the gardens. Their family and friends spent over 60 summers on the island. When the cottages were eventually abandoned, left behind were walls and bricks, the foundations, and even the family trash. This is an actual artifact discovered on Apple Island in the family “privy”. Can this spark your imagination?



Material	Crockery
Color	Cream with dark brown on the reverse side
Size	The curve of the top edge suggests an opening of about 7” diameter
ID	Ai-privy-2020-14

What do you think this might be?

How do you think the Campbells might have used this item?

How did it get broken?

Can you draw what it might have looked like when it was new?

Are there marks on this item that give a clue to its original use?

Use your imagination and creativity! Tell a story, write a poem, draw a picture.

When you are finished, and with your parent’s permission, use this [form](https://forms.gle/LYAs2wFEuQfmM7Vr8) to upload your worksheet to the historical society. The Greater West Bloomfield Historical Society would like to share your creativity with others at the Orchard Lake museum or online.

The Ward-Strong family donated the island to the West Bloomfield School District in 1970, and it was dedicated as the Marjorie Ward Strong Woodland Sanctuary. Learn more about Apple Island and local history at www.gwbhs.org.



Apple Island Exploration



From the 1850s to the 1940s, a group of families headed by Colin and Caroline Campbell had summer cottages on Apple Island. Just like when we go “Up North”, the vacationers of long ago came to Apple Island for relaxation, quiet, and outdoor enjoyment away from the busy-ness of the city. The Campbell children, John, Jessie, Forrest, Jeanie, and Caroline played in the woods, swam in the lake, and tended to the gardens. Their family and friends spent over 60 summers on the island. When the cottages were eventually abandoned, left behind were walls and bricks, the foundations, and even the family trash. This is an actual artifact discovered on Apple Island in the family “privy”. Can this spark your imagination?



Material	Leather and metal
Color	brown
Size	5" L x 3" W
ID	Ai-privy-2020-15

What do you think this might be?

How do you think the Campbells might have used this item?

Why was it discarded?

Can you draw what it might have looked like when it was new?

Are there marks on this item that give a clue to its original use?

Use your imagination and creativity! Tell a story, write a poem, draw a picture.

When you are finished, and with your parent’s permission, use this [form](https://forms.gle/LYAs2wFEuQfmM7Vr8) to upload your worksheet to the historical society. The Greater West Bloomfield Historical Society would like to share your creativity with others at the Orchard Lake museum or online.

The Ward-Strong family donated the island to the West Bloomfield School District in 1970, and it was dedicated as the Marjorie Ward Strong Woodland Sanctuary. Learn more about Apple Island and local history at www.gwbhs.org.



Apple Island Exploration



From the 1850s to the 1940s, a group of families headed by Colin and Caroline Campbell had summer cottages on Apple Island. Just like when we go “Up North”, the vacationers of long ago came to Apple Island for relaxation, quiet, and outdoor enjoyment away from the busy-ness of the city. The Campbell children, John, Jessie, Forrest, Jeanie, and Caroline played in the woods, swam in the lake, and tended to the gardens. Their family and friends spent over 60 summers on the island. When the cottages were eventually abandoned, left behind were walls and bricks, the foundations, and even the family trash. This is an actual artifact discovered on Apple Island in the family “privy”. Can this spark your imagination?



Material	Glass
Color	Clear
Size	4" W; curve of edge suggests a total diameter of approx.. 9"
ID	Ai-privy-2020-16

What do you think this might be?

How do you think the Campbells might have used this item?

How did it get broken?

Can you draw what it might have

looked like when it was new?

Are there marks on this item that give a clue to its original use?

Use your imagination and creativity! Tell a story, write a poem, draw a picture.

When you are finished, and with your parent’s permission, use this [form](https://forms.gle/LYAs2wFEuQfmM7Vr8) to upload your worksheet to the historical society. The Greater West Bloomfield Historical Society would like to share your creativity with others at the Orchard Lake museum or online.

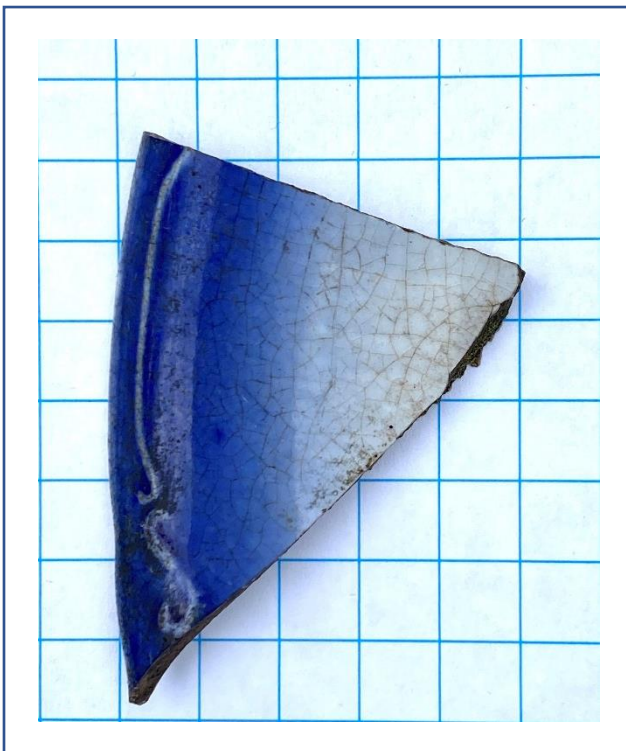
The Ward-Strong family donated the island to the West Bloomfield School District in 1970, and it was dedicated as the Marjorie Ward Strong Woodland Sanctuary. Learn more about Apple Island and local history at www.gwbhs.org.



Apple Island Exploration



From the 1850s to the 1940s, a group of families headed by Colin and Caroline Campbell had summer cottages on Apple Island. Just like when we go “Up North”, the vacationers of long ago came to Apple Island for relaxation, quiet, and outdoor enjoyment away from the busy-ness of the city. The Campbell children, John, Jessie, Forrest, Jeanie, and Caroline played in the woods, swam in the lake, and tended to the gardens. Their family and friends spent over 60 summers on the island. When the cottages were eventually abandoned, left behind were walls and bricks, the foundations, and even the family trash. This is an actual artifact discovered on Apple Island in the family “privy”. Can this spark your imagination?



Material	China
Color	Blue w/white
Size	Approx. 1.75" x 1.25"
ID	Ai-privy-2020-17

What do you think this might be?

How do you think the Campbells might have used this item?

How did it get broken?

Can you draw what it might have looked like when it was new?

Are there marks on this item that give a clue to its original use?

Use your imagination and creativity! Tell a story, write a poem, draw a picture.

When you are finished, and with your parent’s permission, use this [form](https://forms.gle/LYAs2wFEuQfmM7Vr8) to upload your worksheet to the historical society. The Greater West Bloomfield Historical Society would like to share your creativity with others at the Orchard Lake museum or online.

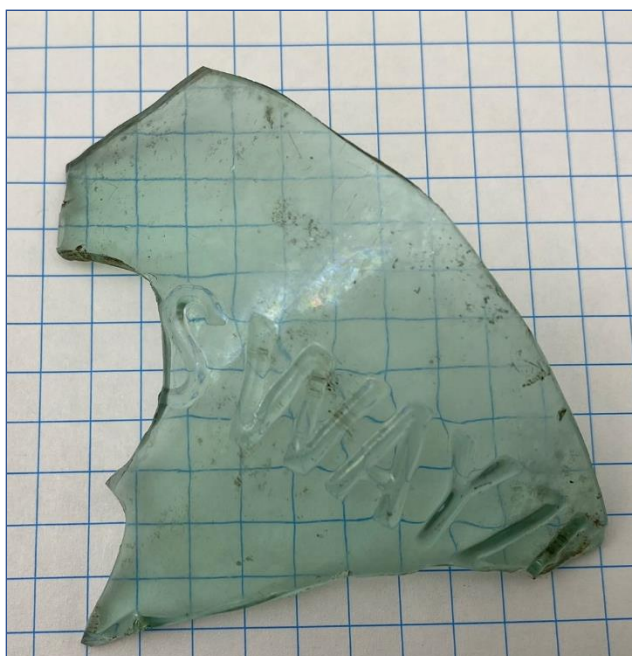
The Ward-Strong family donated the island to the West Bloomfield School District in 1970, and it was dedicated as the Marjorie Ward Strong Woodland Sanctuary. Learn more about Apple Island and local history at www.gwbhs.org.



Apple Island Exploration



From the 1850s to the 1940s, a group of families headed by Colin and Caroline Campbell had summer cottages on Apple Island. Just like when we go “Up North”, the vacationers of long ago came to Apple Island for relaxation, quiet, and outdoor enjoyment away from the busy-ness of the city. The Campbell children, John, Jessie, Forrest, Jeanie, and Caroline played in the woods, swam in the lake, and tended to the gardens. Their family and friends spent over 60 summers on the island. When the cottages were eventually abandoned, left behind were walls and bricks, the foundations, and even the family trash. This is an actual artifact discovered on Apple Island in the family “privy”. Can this spark your imagination?



Material	Glass
Color	Pale green
Size	Approx. 2.75”
ID	Ai-privy-2020-18

What do you think this might be?

How do you think the Campbells might have used this item?

How did it get broken?

Can you draw what it might have looked like when it was new?

Are there marks on this item that give a clue to its original use?

Use your imagination and creativity! Tell a story, write a poem, draw a picture.



When you are finished, and with your parent’s permission, use this [form](https://forms.gle/LYAs2wFEuQfmM7Vr8)

<https://forms.gle/LYAs2wFEuQfmM7Vr8> to upload your

worksheet to the historical society. The Greater West Bloomfield Historical Society would like to share your creativity with others at the Orchard Lake museum or online.

The Ward-Strong family donated the island to the West Bloomfield School District in 1970, and it was dedicated as the Marjorie Ward Strong Woodland Sanctuary. Learn more about Apple Island and local history at www.gwbhs.org.



Apple Island Exploration



From the 1850s to the 1940s, a group of families headed by Colin and Caroline Campbell had summer cottages on Apple Island. Just like when we go “Up North”, the vacationers of long ago came to Apple Island for relaxation, quiet, and outdoor enjoyment away from the busy-ness of the city. The Campbell children, John, Jessie, Forrest, Jeanie, and Caroline played in the woods, swam in the lake, and tended to the gardens. Their family and friends spent over 60 summers on the island. When the cottages were eventually abandoned, left behind were walls and bricks, the foundations, and even the family trash. This is an actual artifact discovered on Apple Island in the family “privy”. Can this spark your imagination?



Material	Metal
Color	Rusty w/silver
Size	4.5" L
ID	Ai-privy-2020-19

- What do you think this might be?
- How do you think the Campbells might have used this item?
- How did it get broken?
- Can you draw what it might have looked like when it was new?
- Are there marks on this item that give a clue to its original use?
- Use your imagination and creativity! Tell a story, write a poem, draw a picture.

When you are finished, and with your parent’s permission, use this [form](https://forms.gle/LYAs2wFEuQfmM7Vr8) to upload your worksheet to the historical society. The Greater West Bloomfield Historical Society would like to share your creativity with others at the Orchard Lake museum or online.

The Ward-Strong family donated the island to the West Bloomfield School District in 1970, and it was dedicated as the Marjorie Ward Strong Woodland Sanctuary. Learn more about Apple Island and local history at www.gwbhs.org.



Apple Island Exploration



From the 1850s to the 1940s, a group of families headed by Colin and Caroline Campbell had summer cottages on Apple Island. Just like when we go “Up North”, the vacationers of long ago came to Apple Island for relaxation, quiet, and outdoor enjoyment away from the busy-ness of the city. The Campbell children, John, Jessie, Forrest, Jeanie, and Caroline played in the woods, swam in the lake, and tended to the gardens. Their family and friends spent over 60 summers on the island. When the cottages were eventually abandoned, left behind were walls and bricks, the foundations, and even the family trash. This is an actual artifact discovered on Apple Island in the family “privy”. Can this spark your imagination?



Material	Metal (galvanized?)
Color	Silver w/rust
Size	4" x 5"
ID	Ai-privy-2020-20

What do you think this might be?

How do you think the Campbells might have used this item?

How did it get broken?

Can you draw what it might have looked like when it was new?

Are there marks on this item that give a clue to its original use?

Use your imagination and creativity! Tell a story, write a poem, draw a picture.

When you are finished, and with your parent’s permission, use this [form](https://forms.gle/LYAs2wFEuQfmM7Vr8) to upload your worksheet to the historical society. The Greater West Bloomfield Historical Society would like to share your creativity with others at the Orchard Lake museum or online.

The Ward-Strong family donated the island to the West Bloomfield School District in 1970, and it was dedicated as the Marjorie Ward Strong Woodland Sanctuary. Learn more about Apple Island and local history at www.gwbhs.org.



Apple Island Exploration



From the 1850s to the 1940s, a group of families headed by Colin and Caroline Campbell had summer cottages on Apple Island. Just like when we go “Up North”, the vacationers of long ago came to Apple Island for relaxation, quiet, and outdoor enjoyment away from the busy-ness of the city. The Campbell children, John, Jessie, Forrest, Jeanie, and Caroline played in the woods, swam in the lake, and tended to the gardens. Their family and friends spent over 60 summers on the island. When the cottages were eventually abandoned, left behind were walls and bricks, the foundations, and even the family trash. This is an actual artifact discovered on Apple Island in the family “privy”. Can this spark your imagination?



Material	Pottery
Color	Cream w/brown
Size	1. X 1”
ID	Ai-privy-2017-21

What do you think this might be?

How do you think the Campbells might have used this item?

How did it get broken?

Can you draw what it might have looked like when it was new?

Are there marks on this item that give a clue to its original use?

Use your imagination and creativity! Tell a story, write a poem, draw a picture.

When you are finished, and with your parent’s permission, use this [form](https://forms.gle/LYAs2wFEuQfmM7Vr8) to upload your worksheet to the historical society. The Greater West Bloomfield Historical Society would like to share your creativity with others at the Orchard Lake museum or online.

The Ward-Strong family donated the island to the West Bloomfield School District in 1970, and it was dedicated as the Marjorie Ward Strong Woodland Sanctuary. Learn more about Apple Island and local history at www.gwbhs.org.



Apple Island Exploration



From the 1850s to the 1940s, a group of families headed by Colin and Caroline Campbell had summer cottages on Apple Island. Just like when we go “Up North”, the vacationers of long ago came to Apple Island for relaxation, quiet, and outdoor enjoyment away from the busy-ness of the city. The Campbell children, John, Jessie, Forrest, Jeanie, and Caroline played in the woods, swam in the lake, and tended to the gardens. Their family and friends spent over 60 summers on the island. When the cottages were eventually abandoned, left behind were walls and bricks, the foundations, and even the family trash. This is an actual artifact discovered on Apple Island in the family “privy”. Can this spark your imagination?



Material	Leather
Color	Brown
Size	Approx. 6" x 3"
ID	Ai-privy-2017-22

What do you think this might be?

How do you think the Campbells might have used this item?

How did it get broken?

Can you draw what it might have looked like when it was new?

Are there marks on this item that give a clue to its original use?

Use your imagination and creativity! Tell a story, write a poem, draw a picture.

When you are finished, and with your parent’s permission, use this [form](https://forms.gle/LYAs2wFEuQfmM7Vr8) to upload your worksheet to the historical society. The Greater West Bloomfield Historical Society would like to share your creativity with others at the Orchard Lake museum or online.

The Ward-Strong family donated the island to the West Bloomfield School District in 1970, and it was dedicated as the Marjorie Ward Strong Woodland Sanctuary. Learn more about Apple Island and local history at www.gwbhs.org.



Apple Island Exploration



From the 1850s to the 1940s, a group of families headed by Colin and Caroline Campbell had summer cottages on Apple Island. Just like when we go “Up North”, the vacationers of long ago came to Apple Island for relaxation, quiet, and outdoor enjoyment away from the busy-ness of the city. The Campbell children, John, Jessie, Forrest, Jeanie, and Caroline played in the woods, swam in the lake, and tended to the gardens. Their family and friends spent over 60 summers on the island. When the cottages were eventually abandoned, left behind were walls and bricks, the foundations, and even the family trash. This is an actual artifact discovered on Apple Island in the family “privy”. Can this spark your imagination?



Material	Glass
Color	Clear
Size	Varies; ¼” grid
ID	Ai-privy-2020-23

What do you think this might be?

How do you think the Campbells might have used this item?

How did it get broken?

Can you draw what it might have looked like when it was new?

Are there marks on this item that give a clue to its original use?

Use your imagination and creativity! Tell a story, write a poem, draw a picture.

When you are finished, and with your parent’s permission, use this [form](https://forms.gle/LYAs2wFEuQfmM7Vr8) to upload your worksheet to the historical society. The Greater West Bloomfield Historical Society would like to share your creativity with others at the Orchard Lake museum or online.

The Ward-Strong family donated the island to the West Bloomfield School District in 1970, and it was dedicated as the Marjorie Ward Strong Woodland Sanctuary. Learn more about Apple Island and local history at www.gwbhs.org.



Apple Island Exploration



From the 1850s to the 1940s, a group of families headed by Colin and Caroline Campbell had summer cottages on Apple Island. Just like when we go “Up North”, the vacationers of long ago came to Apple Island for relaxation, quiet, and outdoor enjoyment away from the busy-ness of the city. The Campbell children, John, Jessie, Forrest, Jeanie, and Caroline played in the woods, swam in the lake, and tended to the gardens. Their family and friends spent over 60 summers on the island. When the cottages were eventually abandoned, left behind were walls and bricks, the foundations, and even the family trash. This is an actual artifact discovered on Apple Island in the family “privy”. Can this spark your imagination?



Material	Pottery
Color	Cream w/green
Size	2.75" x 1.75"
ID	Ai-privy-2020-24

What do you think this might be?

How do you think the Campbells might have used this item?

How did it get broken?

Can you draw what it might have looked like when it was new?

Are there marks on this item that give a clue to its original use?

Use your imagination and creativity! Tell a story, write a poem, draw a picture.

When you are finished, and with your parent’s permission, use this [form](https://forms.gle/LYAs2wFEuQfmM7Vr8) to upload your worksheet to the historical society. The Greater West Bloomfield Historical Society would like to share your creativity with others at the Orchard Lake museum or online.

The Ward-Strong family donated the island to the West Bloomfield School District in 1970, and it was dedicated as the Marjorie Ward Strong Woodland Sanctuary. Learn more about Apple Island and local history at www.gwbhs.org.



Apple Island Exploration



From the 1850s to the 1940s, a group of families headed by Colin and Caroline Campbell had summer cottages on Apple Island. Just like when we go “Up North”, the vacationers of long ago came to Apple Island for relaxation, quiet, and outdoor enjoyment away from the busy-ness of the city. The Campbell children, John, Jessie, Forrest, Jeanie, and Caroline played in the woods, swam in the lake, and tended to the gardens. Their family and friends spent over 60 summers on the island. When the cottages were eventually abandoned, left behind were walls and bricks, the foundations, and even the family trash. This is an actual artifact discovered on Apple Island in the family “privy”. Can this spark your imagination?



Material	Glass
Color	Clear
Size	Varies
ID	Ai-privy-2020-25

What do you think this might be?

How do you think the Campbells might have used this item?

How did it get broken?

Can you draw what it might have looked like when it was new?

Are there marks on this item that give a clue to its original use?

Use your imagination and creativity! Tell a story, write a poem, draw a picture.

When you are finished, and with your parent’s permission, use this [form](https://forms.gle/LYAs2wFEuQfmM7Vr8) to upload your worksheet to the historical society. The Greater West Bloomfield Historical Society would like to share your creativity with others at the Orchard Lake museum or online.

The Ward-Strong family donated the island to the West Bloomfield School District in 1970, and it was dedicated as the Marjorie Ward Strong Woodland Sanctuary. Learn more about Apple Island and local history at www.gwbhs.org.



Apple Island Exploration



From the 1850s to the 1940s, a group of families headed by Colin and Caroline Campbell had summer cottages on Apple Island. Just like when we go “Up North”, the vacationers of long ago came to Apple Island for relaxation, quiet, and outdoor enjoyment away from the busy-ness of the city. The Campbell children, John, Jessie, Forrest, Jeanie, and Caroline played in the woods, swam in the lake, and tended to the gardens. Their family and friends spent over 60 summers on the island. When the cottages were eventually abandoned, left behind were walls and bricks, the foundations, and even the family trash. This is an actual artifact discovered on Apple Island in the family “privy”. Can this spark your imagination?



Material	Shell
Color	White
Size	.25”
ID	Ai-privy-2020-26

What do you think this might be?

How do you think the Campbells might have used this item?

How did it get broken?

Can you draw what it might have looked like when it was new?

Are there marks on this item that give a clue to its original use?

Use your imagination and creativity! Tell a story, write a poem, draw a picture.

When you are finished, and with your parent’s permission, use this [form](https://forms.gle/LYAs2wFEuQfmM7Vr8) to upload your worksheet to the historical society. The Greater West Bloomfield Historical Society would like to share your creativity with others at the Orchard Lake museum or online.

The Ward-Strong family donated the island to the West Bloomfield School District in 1970, and it was dedicated as the Marjorie Ward Strong Woodland Sanctuary. Learn more about Apple Island and local history at www.gwbhs.org.



Apple Island Exploration



From the 1850s to the 1940s, a group of families headed by Colin and Caroline Campbell had summer cottages on Apple Island. Just like when we go “Up North”, the vacationers of long ago came to Apple Island for relaxation, quiet, and outdoor enjoyment away from the busy-ness of the city. The Campbell children, John, Jessie, Forrest, Jeanie, and Caroline played in the woods, swam in the lake, and tended to the gardens. Their family and friends spent over 60 summers on the island. When the cottages were eventually abandoned, left behind were walls and bricks, the foundations, and even the family trash. This is an actual artifact discovered on Apple Island in the family “privy”. Can this spark your imagination?



Material	Wood
Color	Brown
Size	Approx. 1.5”
ID	Ai-privy-2020-27

What do you think this might be?

How do you think the Campbells might have used this item?

How did it get broken?

Can you draw what it might have looked like when it was new?

Are there marks on this item that give a clue to its original use?

Use your imagination and creativity! Tell a story, write a poem, draw a picture.

When you are finished, and with your parent’s permission, use this [form](https://forms.gle/LYAs2wFEuQfmM7Vr8) to upload your worksheet to the historical society. The Greater West Bloomfield Historical Society would like to share your creativity with others at the Orchard Lake museum or online.

The Ward-Strong family donated the island to the West Bloomfield School District in 1970, and it was dedicated as the Marjorie Ward Strong Woodland Sanctuary. Learn more about Apple Island and local history at www.gwbhs.org.



Apple Island Exploration



From the 1850s to the 1940s, a group of families headed by Colin and Caroline Campbell had summer cottages on Apple Island. Just like when we go “Up North”, the vacationers of long ago came to Apple Island for relaxation, quiet, and outdoor enjoyment away from the busy-ness of the city. The Campbell children, John, Jessie, Forrest, Jeanie, and Caroline played in the woods, swam in the lake, and tended to the gardens. Their family and friends spent over 60 summers on the island. When the cottages were eventually abandoned, left behind were walls and bricks, the foundations, and even the family trash. This is an actual artifact discovered on Apple Island in the family “privy”. Can this spark your imagination?



Material	Unknown
Color	Green
Size	4" diameter, 1.5" thick
ID	Ai-privy-2020-28

What do you think this might be?

How do you think the Campbells might have used this item?

How did it get broken?

Can you draw what it might have looked like when it was new?

Are there marks on this item that give a clue to its original use?

Use your imagination and creativity! Tell a story, write a poem, draw a picture.

When you are finished, and with your parent’s permission, use this [form](https://forms.gle/LYAs2wFEuQfmM7Vr8) to upload your worksheet to the historical society. The Greater West Bloomfield Historical Society would like to share your creativity with others at the Orchard Lake museum or online.

The Ward-Strong family donated the island to the West Bloomfield School District in 1970, and it was dedicated as the Marjorie Ward Strong Woodland Sanctuary. Learn more about Apple Island and local history at www.gwbhs.org

Apple Island Artifact Worksheets				
2020				
Number	Description	Year	Location	Notes
01	Rose colored glass bottle neck	2020	Family privy	
02	Wooden piece, square holes	2020	Family privy	
03	Jiffy Jell	2020	Family privy	
04	Hinge	2017	Forrest Campbell Cottage	
05	Bed Spring	2020	Caretaker cellar	
06	Blue, White porcelain shards	2020	Family privy	
07	Glass flower shaped candlestick	2020	Family privy	
08	Nahlmeister bottle	2017	Forrest Campbell Cottage	
09	Heavy metal angle	2020	Family privy	
10	Spigot (?)	2020	Family privy	
11	Yellow glass plate shards	2020	Family privy	
12	Small jar w/contents and lid	2020	Family privy	
13	Portland Ore jar bottom	2020	Family privy	
14	Shard of cream/brown crockery	2020	Family privy	
15	Shoe Sole, womens with nails	2020	Family privy	
16	Cut glass platter shard, clear	2020	Family privy	
17	Flow blue saucer shard	2017	Forrest Campbell Cottage?	
18	Swazey bottle shard	2020	Family privy	
19	Cutlery handle	2020	Family privy	
20	Galvanized bucket, piece	2020	Family privy	
21	Brown, Cream pottery shard	2017	Family privy	
22	Shoe leather w/eyelets	2017	Family privy	
23	Clear glass, decorative, pieces	2020	Family privy	
24	Cream pottery shard w/green decoration	2020	Family privy	
25	Milk bottles, Pontiac Dairy	2020	Family privy	
26	Shell button	2020	Family privy	
27	Wooden crate(?) shards	2020	Family privy	
28	Round hunk green material	2020	Family privy	