



# **Overview, 2018 Annual Report & Developments**

# Who?

**Community members came together in 1974  
as a 501 (c) 3 Charitable Non-Profit organization.**

# Why? HISTORY MATTERS!

**Knowing about our past enriches our quality of living.**

**Mission:** GWBHS is a non-profit organization  
that collects, preserves, researches, and stimulates  
public interest in the history of  
Keego Harbor, Orchard Lake,  
Sylvan Lake and West Bloomfield.

# What, Where, When, & How?

www.gwbhs.org is a robust website  
with 6,000 archives available 24/7



**Research opportunities are  
available by appointment.**

**2017:** website archives  
searchable through PastPerfect -  
online collections database



# 10 Open Houses with themes

**2018: 250  
attendance**



**2018: Double the number of cars at  
the August Vintage Car Open House**



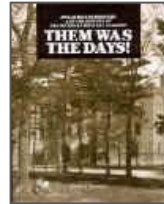
# Museum Store

Local history books, maps, and other items are available at the Museum. Some items are available at other locations.

2018: Apple Island cedar coaster



2017: Orchard Lake tile, Apple Island ornament, GWBHS baseball hat





# 11-13 Events Annually

350-450 attend: Library presentations, Orchard Lake Nature Sanctuary walks, Pine Lake cemetery tours & other events

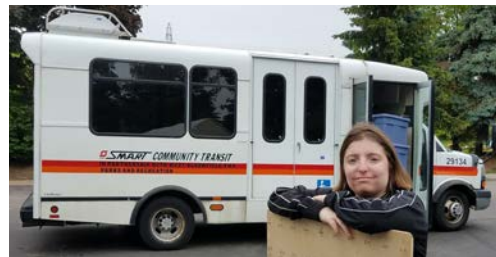
**2018: 485 attendance**



# Public Annual Apple Island Tours

250-500 attend the 2nd weekend in June. See [gwbhs.org/apple-island-tours](http://gwbhs.org/apple-island-tours)

**2018: WB Parks provided transportation.**





# Offer 3 Group Programs

- Apple Island Tours for 250-500 West Bloomfield Schools 2nd grade students & others
- Museum Tours for 75-100 Bloomfield Hills Schools Kindergarteners & other groups
- GWBHS overview & area history presentation

**2018: 387 attendance**



# Recent & 44 Year Total Attendance Tallies

	2017	2018	44 year total
<b>Total Attendance</b>	<b>1,302</b>	<b>1,262</b>	<b>36, 234</b>
<b>Apple Island Tours</b>	<b>110</b>	<b>150</b>	<b>11,440</b>
<b>Open Houses</b>	<b>260</b>	<b>252</b>	<b>4,112</b>
<b>Events</b>	<b>420</b>	<b>635</b>	<b>8,139</b>
<b>Apple Island Student Groups</b>	<b>405</b>	<b>300</b>	<b>7,605</b>
<b>Museum Visits &amp; Other programs</b>	<b>105</b>	<b>87</b>	<b>2,782</b>

# Communications

3 newsletters yearly

Brochure, event postcard

Email, social media & online listing sites

### UPCOMING events

#### Archaeology for Teens

Thursday, July 11, 12, 13, Aug. 5  
1-4 p.m., Orchard Lake Museum,  
1111 Orchard Lake Road

Learn about the science of archaeology through hands-on activities, projects, and more. All ages are welcome and all archaeological and earth-related costs are fully subsidized by the museum. Registration required by July 1. For more information, visit [www.gwbhs.org](http://www.gwbhs.org) or call 248.667.1313.

#### Archaeology for Adults

Thursday, August 21, 22, 23  
6-8 p.m., West Bloomfield Museum,  
1111 Orchard Lake Road

Learn about the science of archaeology through hands-on activities, projects, and more. All ages are welcome and all archaeological and earth-related costs are fully subsidized by the museum. Registration required by July 1. For more information, visit [www.gwbhs.org](http://www.gwbhs.org) or call 248.667.1313.

#### Vintage Techniques!

Thursday, September 11, 12, 13  
6-8 p.m., West Bloomfield Museum,  
1111 Orchard Lake Road

The Greater West Bloomfield Historical Society is proud to present a series of hands-on workshops for adults. Each workshop will focus on a different aspect of historical life and will include a variety of activities, projects, and more. All ages are welcome and all costs are fully subsidized by the museum. Registration required by July 1. For more information, visit [www.gwbhs.org](http://www.gwbhs.org) or call 248.667.1313.

COMMUNITY PARTNERS

## VOLUNTEER OPPORTUNITIES

Greater West Bloomfield Historical Society

Training provided  
Contact [volunteer@gwbhs.org](mailto:volunteer@gwbhs.org) or

### Committees

- Archives
- Development/fundraising
- Event planning
- Materials distribution
- Membership
- Museum & Municipal Exhibits
- Museum gardens
- Newsletter
- Publicity
- Researcher
- Volunteer coordinator
- Storage maintenance
- Writing

### Docents

- Apple Island: 2<sup>nd</sup> grade groups and 4<sup>th</sup> grade Apple Island Tours, the 3<sup>rd</sup> May weekend
- Museum: 2<sup>nd</sup> grade groups
- Orchard Lake Museum Open Houses, on 2<sup>nd</sup> Sunday, 1-4 p.m.

### Event Volunteers

Annual Apple Island Tours  
Events



## History Matters

Spring 2016 Keweenaw Harbor • Orchard Lake • Spring Lake • West Bloomfield

### Apple Island Tours to Highlight Farming Activities in May

The annual Apple Island Tours will be the weekend of May 21 - 22 from 11am - 5pm, starting from Orchard Lake Museum. In addition to the island tour (ages 5+), activities will be provided on the grounds of the museum, including exhibits and activities focused on early farming. Children of all ages can try their hand at farm chores, including using a plow, chopping wheat, crosscut saw, and jigsaw and listening to a book about West Bloomfield apple farmers hourly. Presenters will share about a wide range of topics, including spinning, early outdoor motion, and archaeology. See [gwbhs.org/apple-island-tours](http://gwbhs.org/apple-island-tours) for additional details.

We are seeking sponsors for this event. Sponsorships start as low as \$25 for an Apple Sponsor, which includes having your name listed on the event's web page and in the newsletter. More details about sponsorships are available at [gwbhs.org/sponsorships](http://gwbhs.org/sponsorships).

Tour guests take a pontoon boat ride to Apple Island for the 2.5 hour trip.

### West Bloomfield Schools and GWBHS Celebrate the Unveiling of School Panels

Our School History is an ongoing project of GWBHS to document the history of area schools. More than three years ago, GWBHS members Sue Williams, Helen Jane Peters, and others began to collect information and document the history of schools in the area. Christy Forhan led the effort to develop and design historical information panels that will be displayed at each of West Bloomfield School District's schools.

An event to unveil the panels was held at West Bloomfield Township Library on Wednesday, March 30.

[www.gwbhs.org](http://www.gwbhs.org)

# Community Presence

Library exhibits



Municipal exhibits at  
West Bloomfield & Orchard Lake bldgs.

*Splash*, CCTV video show segments



# Involved in community events

**Participate:** Orchard Lake Fine Art Show, Memorial Day Parade, MI Week Breakfast

**2018:** A GWBHS page in each West Bloomfield TODAY publication quarterly, with two HitePhoto sponsorships.





# Communications & Membership

COMMUNICATIONS	2015	2016	2017	2018
Gwbhs.org hits	8,929	10,092	8,524	
Eblasts sent	52	61	56	57
Email contacts	422	522	580	560
Facebook posts per month	20	20+	20+	17+
Followers	254	340	390	465
Highest post reach	513	1,600	643/ 1,500	1,468
Largest groups	71% women	61% women	61% women: 35-65+	Women 67%, most from West Bloomfield

## Memberships

Membership increased  
from 61 in 2006 to  
134 in 2016  
(highest with  
no perks included)

**2018: 62 with 71  
complimentary  
members**

# Projects

**Installed historical markers** at Westacres Library & Orchard Lake Schools, 1995

**Spoke out on issues:** Sale of Orchard Lake Nature Sanctuary, 1990  
Renaming of Green School, 2011



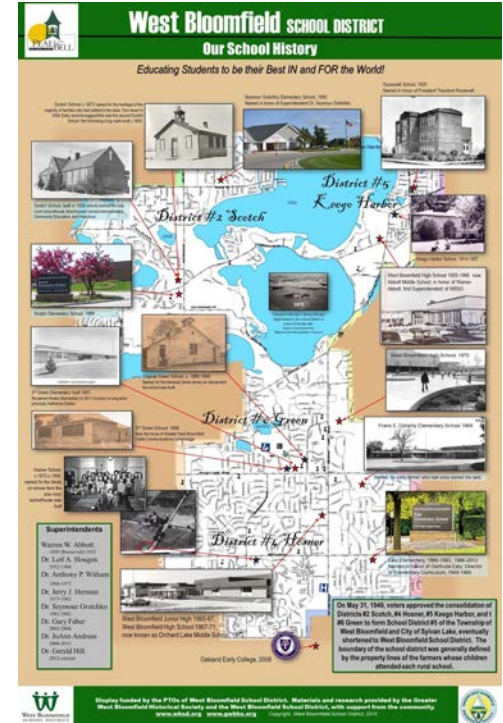
Orchard Lake Nature Sanctuary



# Our School History

## 2010-2016:

- West Bloomfield public school histories are available online at [gwbhs.org](http://gwbhs.org)
- Permanent school history exhibit panels are installed in each WBSD building
- Traveling exhibit panels are exhibited in the community & at WBSD



# Researched & Supported Outdoor Wayside Exhibits

Over 20 signs erected throughout the community.



Dedication of West Bloomfield Parks & Recreation Wayside exhibits, 2014. L to R Joe Hines, Brian Yopp, Dan Navarre, Ron Gay, and Nancy Thompson



. Unveiling GWBHS  
Wayside exhibit, 2014. L to R  
Linda Kidd, Helen Jane Peters,  
Gina Gregory, Sue Williams,  
Anita Pinson



Waterford, Pontiac, Bloomfield, &  
West Bloomfield 1817 township  
survey marker exhibit, 2017. L to R  
Steve Stone, Eric Wiegand, John  
Marshall, Helen Jane Peters

# Sponsored Apple Island Archaeology Research



## Research work:

2001 Madonna University Ted Gish

2008 Madonna University Ted Gish, WBSD, GWBHS, Dr. David Brose

2013 & 2014 Western Michigan University student project with Dr. Louise Wurst & Mark Hock

2015 Western Michigan University MA candidate Skylar Bauer prepared 108 page evaluation & application

2016 Dr. LouAnn Wurst submits Historic Apple Island designation application, learns additional support needed

2017 Application resubmitted

2017 University of the Americas Ph.D. candidate Mark Hock conducted Apple Island dissertation project fieldwork.

**2018 Apple Island Historic Site is listed in the National Register of Historic Places**



# Receive Awards



MICHIGAN WEEK BREAKFAST AWARDS Lifetime Volunteer Leadership: Doris Bonneville, Bessie Weatherston 1999, Volunteer Service Frank & Nanacy Salo 2006, Cara Kazanowski 2007, Helen Jane Peters 2009, Dave & Betty Bradbury 2010, Honor Roll Richard “Buzz” Brown 2013, Gina Gregory 2015, Christy Forhan & Helen McAllister 2016, Hidden Treasure Sue Williams 2018.



Michigan Week Breakfast Community Achievement Award:  
GWBHS 1990, 2014;  
Motorcities Heritage Wayside Exhibits, 2014



GWBHS 40th Anniversary Proclamation from  
City of Orchard Lake Mayor Jacqueline Beach & GWBHS board members  
(West Bloomfield Proclamation not shown)

# Give GWBHS recognition



**Distinguished Service Award:** 2011 Helen Jane Peters, 2012 Buzz Brown & Sebrina Borth, 2013 Charles Martinez, 2014 City of Orchard Lake council members, 2015 William McIsaac, 2016 Christy Forhan



**Outstanding Community Service Award:** 2011 Countryside Improvement Association on 100 anniversary, Westsacres on 75 anniversary, Father Whalen, Don & Iris Green, 2012: West Bloomfield Parks & Recreation, West Bloomfield Library\*. **President's Merit Award:** 2014 Angela Cini, Paul Mellerowicz, Judy Kerr\*, Hannah Dagg\*, 2015 Melissa Gilbert, Anita Pinson, DuAnne Sonnevile, 2016 Christian Sonnevile, 2017 John Marshall\*, Helen Jane Peters\*, Ron Campbell\*

\*Not shown

# Who are 2018 leaders?



## **2018 Board Members, top L-R:**

Hannah Dagg Communications & Web

Linda Kidd Historian

Diane Eanes Recording Secretary & Volunteers

Bottom L-R: Carol Fink Corresponding Secretary

Gina Gregory President & Events

Karen Pushie DataBase Chair

Sue William Treasurer, Exhibits & Researcher



## **2018 Finance Committee L-R**

Front: Sue Williams, Kristen (5/3rd Bank) Gina Gregory

Back: Jim Bayson, Christian Sonnevile, & John Hartwig



## **Communication Coordinator**

Part time, Karen Huyghe

# 2018 Committee Leaders



**Apple Island site cleaning:** Matt Chaffin, Carol Fink, Nick Hersh, Gina & Rob Gregory, Glen Kling

**Building maintenance** Paul Mellerowicz

**Event Attendance:** Sally Wenczel

**Group Program Coordinator** Don Newman

**GWBCCC Senior Resource Group Liaison** Barb Krause

**New - Intern:** Kayla Taub

**Miscellaneous Income:** Christian & DuAnne Sonnevile, Hannah

Dagg, Barb Krause, Gina Gregory, Sue Williams

**Outdoor Sign Wording** Ron Montgomery, Linda Kidd

**West Bloomfield School District Liaison** Christy Forhan



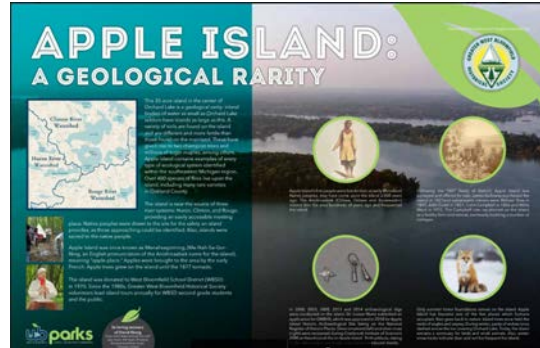
Clean Apple Island building sites



# 2018 New Developments

## GAVE COMMUNITY SUPPORT

- WBP:** Participate in inaugural Maple Sugaring Breakfast event
- Provide Apple Island outdoor exhibit wording and images
- Create exhibits for the inaugural Heros Appreciation Breakfast





# 2018 New Developments

## GAVE COMMUNITY SUPPORT

**Cable Commission:** GWBHS members serve on the Community Advisory Panel

**West Bloomfield Township:** Assist in West Bloomfield Township 175th anniversary history retrospective

**Oakland County history:** Participate and support the 1818 Exploring Oakland 200th Anniversary Committee culminating in a 30 minute documentary video



# 2018 New Developments

## IN HOUSE WORK

Successful first annual appeal

Create a custom user-friendly database manual

Improve internal data processing

Sell Apple Island cedar coasters

Receive large museum donations

Per Strategic Plan: Hire 12 hour-monthly Office & Activities Coordinator to relieve board tasks beginning 2019



# 2018 New Developments

## APPLE ISLAND

Volunteers finish clearing debris from interpretive sites



Apple trees were planted with second grade WBSD students



Apple Island Historic Archaeological Site is listed in the National Register of Historic Places, 2018



# 2018 Volunteer Recognitions

**GWBHS presents**

**Distinguished Service Award:** Mari Bem, David Brose, PhD, LuAnn Wurst, PhD



**President's Award:** Jim Cherfoli, Mikwahdahn (Mike) Jewell, Glen King



**MI Breakfast presents**

**Hidden Treasure Award:** Sue Williams



# How? Support from

Memberships, donations, tribute donations, planned giving, grants, civic partners, sponsorships, & retail supporters



Bellacinos, Sylvan Lake  
Galaxy Graphics  
Great Harvest Bread Co., Commerce



Smile.amazon.com  
Kroger Rewards

Apple Island archaeology project grants from  
Saint Frances Foundation of Michigan  
2008, 2013, 2014

Frances Gadd  
Bequest 2011





# 2018 Sponsors

Hite Photo is GWBHS page WB TODAY page sponsor for two issues

WB Parks donates Apple Island Tours bus transportation

West Bloomfield School District provides island docent transportation



## Thank you to the sponsors of Apple Island Tours 2018!

### Main Event Sponsor

bugs Beddow

### Sponsors

Bellacinos in Sylvan Lake

Galaxy Graphics

Mezza

Walgreens

West Bloomfield Parks

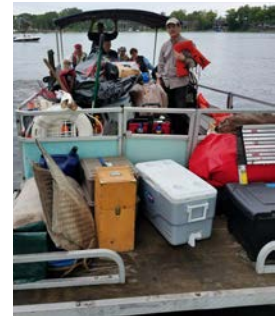
West Bloomfield School District

### Partners

Beacon Newspaper

City of Orchard Lake

Orchard Lake Schools



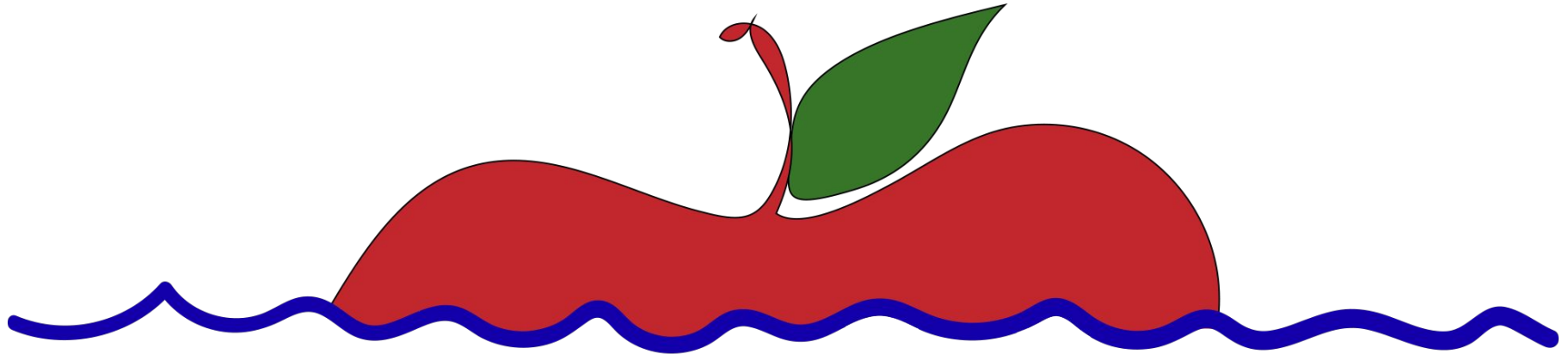
## Event Sponsors

Melaleuca.com/LCharter, Online

Wellness Shopping Club

Michigan Chiropractic Specialists

**Save the date!**



Apple Island National Register of Historic Places  
**CELEBRATION**

**JUNE 7, 2019 10:00am**

Orchard Lake Community Church, Presbyterian  
5171 Commerce Road



# 44 Year Recap

*Now celebrating 45 years adding value to the community as we collect, preserve, research, and stimulate interest in the unique history of Keego Harbor, Sylvan Lake, Orchard Lake, and West Bloomfield.*

**36,000 people attended GWBHS programs in 44 years.**

*Apple Island was listed in the National Register of Historic Places, 2018, and GWBHS lead the effort!*

**19,000 people toured Apple Island with GWBHS in 44 years.**



# What's needed?

Continued Attendance, Membership, Sponsorship  
and Financial Donations !

Help keep local history alive for the community!





# Join us!



so GWBHS is vibrant and sustainable -  
because our local

## HISTORY MATTERS!

Thank you  
for your attention!

