



OVERVIEW

with 2015 Highlights

Who?

**Community members
came together in 1974**

as a volunteer-run, non-profit 501 (c) 3 organization.

Supported by donations only!

Why?

HISTORY MATTERS!

**Enriches the quality of living
by preserving the past, to share today and tomorrow.**

Mission

**GWBHS is a non-profit organization
that collects, preserves, researches, and stimulates
public interest in the history of
Keego Harbor, Orchard Lake,
Sylvan Lake and West Bloomfield.**

How, What, Where & When ?

www.gwbhs.org is a robust website with
6,000 archives available 24/7



Open Houses Monthly

Orchard Lake Museum

3951 Orchard Lake Road (at Lone Pine)
2nd Sundays, 1-4 p.m.

- local history exhibits
- monthly, often with special topics
- hands-on activities

**Research opportunities
are available by
appointment.**



2015: open house themes

Outdoor sign: post monthly
open house theme & event
title with date



Author Ron Gay shares
West Bloomfield & the Tri-Cities, 2015



Hands-on exhibit & activities



WWI mementos



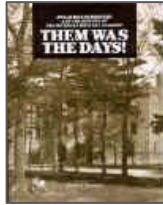
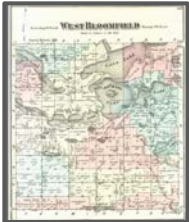
DuAnne Sonnevillie shares spinning

Museum Store

Maps

Books about the area

Reproduced photos
(see gwbhs.org)



New in 2015: West Bloomfield
& the Tri-Cities by Ron Gay



Public Apple Island Tours Annually

250-500 attend

third May weekend

gwbhs.org/apple-island-tours



11-13 events annually

350-450 attend: Library presentations, Orchard Lake Nature Sanctuary walks, Pine Lake cemetery tours & other events



2015: Archaeology class

Artifacts discovered at the historic Emmendorfer home



Archaeology 101 training session



Cistern found and explored



Exhibit of discovered items
in foreground

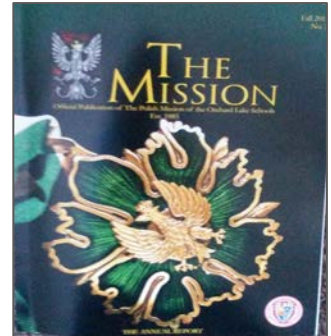
2015: New attendance record

GWHBS sponsored event with West Bloomfield Library: The Underground Railroad Michigan Connection had an attendance of 100.



2015: GWHBS Highlighted

The GWHBS event sponsored with The Polish Mission: Michigan Military Academy Morning, was highlighted in The Mission, an annual publication celebrating the 130th Polish Mission anniversary.



3 Group Programs

- Apple Island Tours, 250-500 attend, West Bloomfield Schools 2nd grade students & others
- Museum Tours, 75-160 attend, Bloomfield Hills Schools kindergarteners
- Area history presentations



Attendance Records

	2015	41 year total
Total Attendance	970	30,970
Large Annual Events		12,750
(Apple Island Tours)	(350)	(10,350)
Open Houses	120	3,120
Events	350	6,350
Apple Island Student Groups	75	6,475
Museum Visits & Other programs	130	2,400

Statistics

COMMUNICATIONS	2013	2014	2015
Gwbhs.org hits	7,823	10,146 (Homes Tour)	8,929
Geocaching Museum visit total			248
Eblasts sent per month		6	52
Eblast view by phones			50%
Eblast contact list			422
Facebook posts per month	6	6	20
Facebook “likes”		172	254
Facebook most successful view rate			1,000

Memberships

Membership increased
from 61 in 2006 to
125 in 2015.

2015: 71% FB fans are women.

The largest age demographic is 23% ages 45-54.

Communications & Community Exhibits

3 newsletters yearly, available at civic blgds.

Municipal & Library exhibit cases

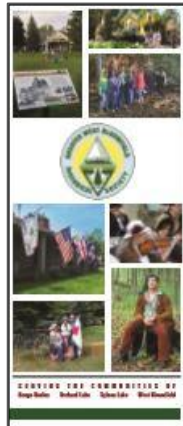
Brochure, event postcard

Email, social media & online listing sites

Civic Center TV promos



West Bloomfield Library



West Bloomfield Town Hall

Community Involvement frequently

Articles: Orchard Lake Living & West Bloomfield TODAY publication

Participate: Keego Harbor & Sylvan Lake parades,
Sylvan Lake Ice cream social & more

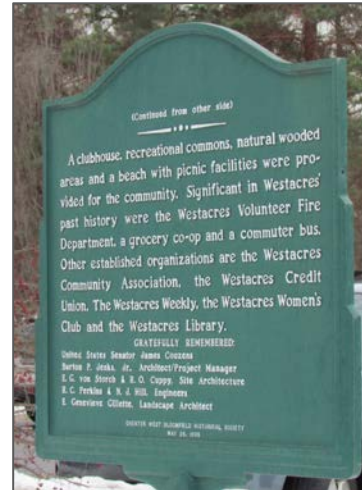
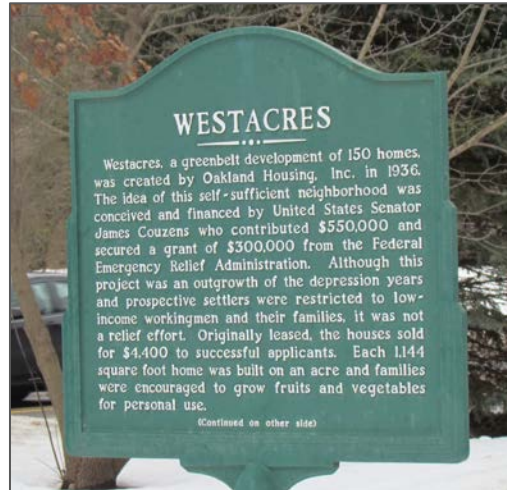


Early Special Projects

Installed historical markers

Spoke out on issues

(Sale of Orchard Lake Nature Sanctuary & renaming of Green School)



Sponsored Archaeology Digs

resulting in 2016 historic Apple Island designation
application submission



Digs: Madonna University Dr. Ted Gish 2007
Madonna University, WBSD, GWBHS Dr. David Brose 2008
Western Michigan University Dr. Louise Wurst 2013 & 2014

Western Michigan University MA candidate Skylar Bauer prepared 108 page evaluation & application, 2015
University of the Americas Ph.D. candidate Mark Hock plans an Apple Island dissertation project, 2016

Research & Funds Support Outdoor Wayside Exhibits

Over 20 signs erected throughout the community



Dedication of
West Bloomfield Parks & Recreation
Wayside exhibits, 2014

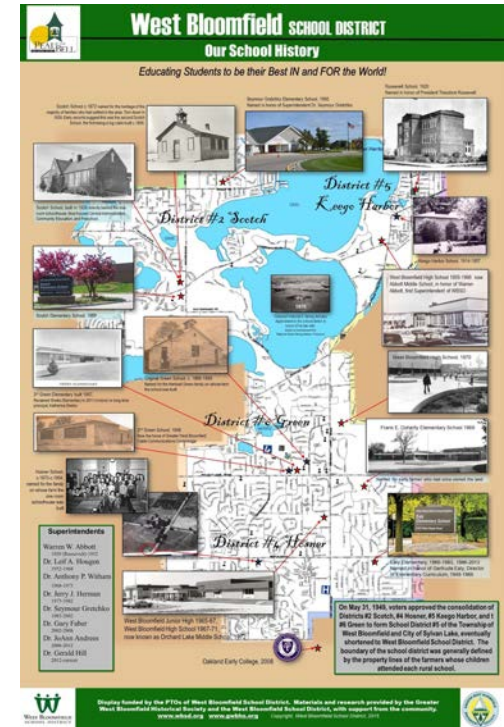


. Unveiling of GWBHS
Wayside exhibit, 2014

Developed Our School History with West Bloomfield Schools

2016:

- Our School History resource web pages at gwbhs.org
- Exhibit panels installed in each building



2015: Summer intern

Jonathan Watson

Texas University, MA candidate

Developed for GWBHS an extensive manual of best practices and recommendations for museum collections, archives, & exhibits

Our School History - shared exhibit perspectives which improved panel design



Recorded a Civic Center TV Archaeology 101 promo

Past Perfect – Fully searchable online catalog

2015: Entry procedure shared

2016 will see online use!

Volunteers trained

Priorities defined

Board gives approval to move thousands of
“locked” items so descriptive information can be
updated and then be available online

Resulting in better searchability!



2015: Strategic Plans Updated

with facilitator Brian Golden



Develop focus areas:

1. Strengthen board
2. Vibrant museum
3. Education
4. Volunteers



2015: Board member support

**Hired part time independent
Communication Coordinator
Karen Huyghe**

- Handle & increase PR communication
- Develop event & open house speaker information
- Develop content for Beacon listings, email blasts & social media postings, localstew.com



Karen makes a point when sharing her strategies during a spring board member meeting

Who?

Volunteers and volunteer leaders



2015 Board Members



2015 Finance Committee



Receive Awards

Michigan Week Breakfast & Municipal Recognitions



Lifetime Achievement Awards to
Bessie Weatherston 1999, Cara Kazanowski 2007, Dave & Betty Bradbury 2010, Nancy Salo,
(Doris Bonneville not shown)

Honor Roll to
Richard "Buzz" Brown, 2013



Community Achievement Award to
GWBHS 1990, 2014, and Wayside Exhibits, 2014



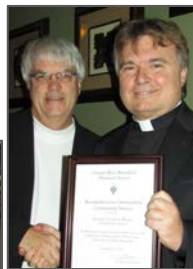
GWBHS 40th Anniversary Proclamation from
City of Orchard Lake Mayor Jacqueline Beach & GWBHS board
members (award from West Bloomfield not shown)

Give recognition (2011 - 2014)



Distinguished Service Award

2011 Helen Jane Peters, 2012 Buzz Brown & Sebrina Borth, 2013 Charles Martinez, 2014 City of Orchard Lake council members



Outstanding Community Service Award

2011: Countryside Improvement Association on 100 anniversary, Westsacres on 75 anniversary, Father Whalen, Don & Iris Green.

2012: West Bloomfield Parks & Recreation (West Bloomfield Library not shown)



Merit Award

2014 Angela Cini, Paul Mellerowicz
(Judy Kerr & Hannah Daggs not shown)

2015: Volunteer recognition

GWBHS gives 2015 recognition with
Distinguished Service Award to William McIsaac
Merit Awards to Anita Pinson, DuAnne Sonnevile, Melissa Gilbert



Appreciate new volunteers

2015:

Tanya Sharon- Storage Coordinator, shopper
Karen Faett- Vintage Clothing refreshment chair
Sue Murphy - events
Chris Considine - events



Chris Considine



L to R: Tanya Sharon, Karen Faett, Ella Baker, Sue Murphy, Diane Eanes

2015: Board Members & Continuing Committee Volunteers

Board Members

back L - R: Editor Hannah Dagg
Corresponding Secretary Carol Fink
Membership Chair DuAnne Sonnevile
Volunteer Coordinator Diane Eanes

front L - R: Vice President Anita Pinson
Historian Helen Jane Peters
Treasurer Sue Williams
President Gina Gregory



Continuing Committee Volunteers

Melissa Gilbert - Accessions
Don Newman – Group Program Coordinator
John Hartwig – Finance Committee
Jim Bayson – Finance Committee
Christian Sonnevile – Finance Committee &
Fundraising Chair
Anita Pinson - Michigan Week Award
Breakfast Committee
Ron Montgomery – Outdoor sign wording
Paul Mellerowicz – Museum maintenance
Tanya Sharon - Storage, shopper

Appreciate 2016 new volunteers & commitments



Sue Grifor
Membership Chair & volunteer

Sue Grifor & Ron Montgomery - Digital cataloging

Christian Sonneville - Fundraising chair

Mary Dunkley - Fundraising, Apple Island Logistics

Eric Weigand - Library case

Pat Glasgow - Materials distribution coordinator

Take newsletters to:

Sue Williams - Keego Harbor board meeting

Jennifer Oram - Orchard Lake board meetings

Helen Jane Peters - Sylvan Lake board meetings

Larry Weisman - West Bloomfield board meetings

How? Only with a small budget supported by

Memberships

Donations

Grants

Civic & Retail Support



Bellacinos, Sylvan Lake
Galaxy Graphics
Great Harvest Bread Co., Commerce

Frances Gadd
Bequest 2011

Apple Island archaeology project grants from
Saint Frances Foundation of Michigan
2007, 2013, 2014



What's needed?

A small group of dedicated volunteers fills many needs.

**More support is needed at all levels
to continue successfully.**

Volunteers in all areas

Financial support for

increasing operating costs

special projects, such as online fully searchable collection catalog web hosting

Join us!



**We need your support
so GWBHS is vibrant and sustainable
because our local**

HISTORY MATTERS!

**Thank you
for your attention!**

