



Greater West Bloomfield Historical Society
Research Article (in progress 7/23/2008)

“Schulak Farm”

(currently owned by the West Bloomfield Township [Parks & Recreation Department](#))
by Neil Hepburn

RESEARCH2

1872 WEST BLOOMFIELD PLAT MAP.....4

ORIGINAL PURCHASERS.....5

CHANGES IN OWNERSHIP6

WEST BLOOMFIELD TAX RECORDS – SECTION 32 –.....7

MURRAY FAMILY RESEARCH.....9

YOUNG12

JEWELL.....13

Research

According to Land Patents on file with the Oakland County Register of Deeds, the land the Schulak Farm now sits on was original sold by the US Government to Samuel Bassett, of Seneca Co., NY, on May 28, 1831. It was part of a 480 acre tract wholly in Section 32 of West Bloomfield Township.

Bassett likely never settled the land, as he does not appear on any West Bloomfield tax role or census, and may have been merely a speculator, as was common at the time. West Bloomfield Tax Records indicate that by 1845, an 80-acre portion of Bassett's land, including the parcel that is now known as the Schulak Farm, was owned by Theron Murray, a member of a family of early North Farmington pioneers. Theron, who was purchasing his own tracts of land by 1831, also owned the 80 acres adjoining to the south (fronting on 14 Mile). A very successful farmer, Theron Murray eventually rose to prominence in the area. His last house, now a Michigan Historical Landmark, lies about a mile away, in Farmington Township, on the west side of Halsted Road, just south of 14 Mile.

West Bloomfield Tax Records state that in 1845 Theron paid \$320 in tax on the 80-acre parcel now containing the Schulak Farm. Based on analysis of the tax record over the ensuing years, it does not appear that Theron greatly improved the land, i.e. there was probably no, or no elaborate, structure erected during the 30-some years Theron owned the land. In contrast, the 80 adjacent acres he owned to the south appears to rise in value due to improvements that likely included his home. According to an 1877 History of Oakland County, Theron and his two sons were "extensively engaged in fruit growing, principally apples, which they have by intelligent management made very profitable." Murray sold the 80-acres fronting on Maple Road to Charles W. Jewell in the late 1860s. Theron died in 1878 and is buried in North Farmington Cemetery.

Jewell, a New York State native, had moved to West Bloomfield with his parents, Edward (a blacksmith) & Sarah, prior to 1850. The 1870 Federal Census reveals a 31-year-old Charles, his Michigan-born, 28-year-old wife Hannah, and their 4 children living in West Bloomfield Township. However, the 1872 Plat Map indicates the Jewell house to be on another portion of his West Bloomfield landholdings, located on

the east side of Haggerty Road, just south of Richardson Road. So it would appear that, as had Murray before him, Jewell employed the future Schulak property as ancillary farmland, perhaps as an orchard.

By 1880 the land now containing the Schulak Farm belonged to the Young family. The first among them, W. K. Young is noted as the property owner on the 1883 tax role. Young, a Pennsylvania native, who also owned an 80-acre farm and house on Walnut Lake Road, appears in West Bloomfield records as early as 1860. By 1886, John E. Young, W.K.'s West Bloomfield-born son, is the official title holder. John's name is associated with the property through the early 1900s.

Here then is the dilemma. What year was the building known as the Schulak House built? The foundation of the present structure seems to be of pre-1900 construction, yet a home fails to appear on either the 1872 or 1896 West Bloomfield plat maps. It is possible that the structure now known as the Schulak House was not originally a dwelling. Was it, or its nucleus, perhaps an out building designed for equipment or apple storage (as these types of structures were not normally featured on the plat map), or was the original frame structure which sat on the stone foundation the subject of some disaster, such as fire? Or did the plat-mapmakers merely make careless omissions? It's close to impossible to say.

In 1883 W. K. Young paid \$1,700 in taxes on the 80-acre site. By 1906, John Young was paying \$2,200 in taxes on the same property, roughly 60% of what surrounding farmers on 80-acre tracts were assessed. This hardly indicates vast improvement during that time span, appearing more likely to represent normal & steady appreciation of agricultural land. The 1917 West Bloomfield Plat Map is the earliest to indicate a structure where the Schulak House now stands and John's is the name associated with it. It is very likely that this is the same structure which appears today. John E. Young died in 1928 and is buried in neighboring Commerce Township.

A 1927 West Bloomfield Plat Map shows John M. Ryan as the owner of the 80 acres.

A 1975 West Bloomfield Plat Map shows Bernard Schulak as the owner of a 4.85-acre parcel containing the present buildings. The balance of the former 80-acre farm, a total of 75.15 acres, was owned by Walled Lake Schools at the time.

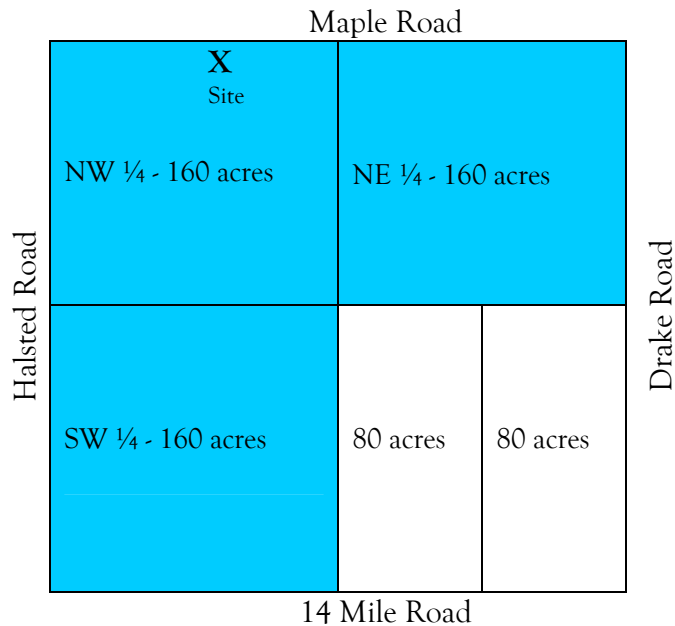
1872 West Bloomfield Plat Map



Note:

- District #3 Schoolhouse, often referred to as Pennell School, on Halsted Road, north of Maple
- A. B. Moore residence, which still survives

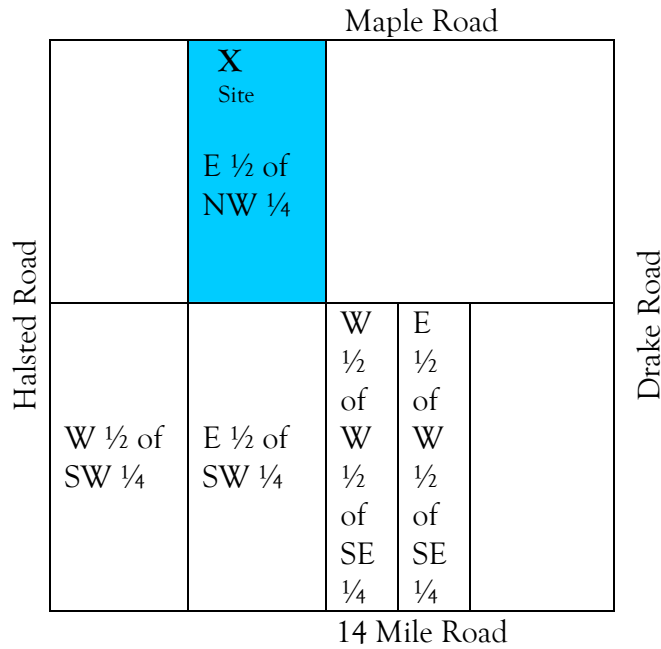
Original Purchasers



WEST BLOOMFIELD TOWNSHIP - SECTION 32

| <u>Portion of Section 32</u> | <u>Original Purchaser</u> | <u>Date</u> |
|------------------------------------|-----------------------------------|---------------|
| ➔ NW, NE, & SW 1/4s (480 acres) | Samuel Bassett Seneca Co., NY | May 28, 1831 |
| E 1/2 of SE 1/4 (80 acres) | Daniel Marlatt Oakland Co., MI | June 18, 1833 |
| W 1/2 of SE 1/4 (80 acres) | Theron Murray Oakland Co., MI | May 05, 1834 |

Changes in Ownership



E 1/2 of NW 1/4 of SECTION 32 – 80 ACRES

Ownership as indicated on West Bloomfield plat maps:

- 1857 Theron Murray
- 1872 C. Jewell
- 1896 J. E. Young
- 1908 J. E. Young
- 1917 John E. Young
- 1927 J. Ryan
- 1930 John M. Ryan
- 1975 Bernard Schulak (4.85 acres)
- Walled Lake Schools (75.15 acres)

West Bloomfield Tax Records – Section 32 –

| | E ½ of NW ¼ | W ½ of SW ¼ | E ½ of SW ¼ | W ½ of W ½ of SE ¼ | E ½ of W ½ of SE ¼ |
|------|---------------------------|----------------------------|---------------------------|----------------------------|-----------------------|
| 1845 | Theron Murray \$ 320. | | Theron Murray \$ 320. | | |
| 1847 | Theron Murray \$ 240. | | Theron Murray \$ 350. | | |
| 1848 | Theron Murray \$ 278. | | Theron Murray \$ 347. | | |
| 1849 | Theron Murray \$ 232. | | Theron Murray \$ 242. | | |
| 1850 | Theron Murray \$ 220. | | Theron Murray \$ 485. | | |
| 1851 | Theron Murray \$ 218. | | Theron Murray \$ 531. | | |
| 1852 | Theron Murray \$ 220. | | Theron Murray \$ 530. | | |
| 1853 | Theron Murray \$ 800. | | Theron Murray \$1,660. | | |
| 1854 | Theron Murray \$ 800. | Theron Murray \$3,400. | | | |
| 1855 | Theron Murray \$ 800. | Theron Murray \$3,400. | | | |
| 1856 | Theron Murray \$ 950. | Theron Murray \$3,440. | | | |
| 1857 | Theron Murray | Theron Murray | | Winslow | |
| 1861 | Theron Murray \$1,100. | Theron Murray \$3,450. | | | |
| 1862 | Theron Murray \$1,100. | Theron Murray \$3,400. | | | |
| 1863 | Theron Murray \$1,100. | Theron Murray \$1,500. | Theron Murray \$2,000. | | |
| 1864 | Theron Murray \$1,000. | Ozra L. Murray \$1,440. | Theron Murray \$1,920. | | |
| 1865 | Theron Murray \$1,000. | Ozra L. Murray \$1,500. | Theron Murray \$2,000. | | |
| 1867 | Theron Murray \$ 900. | Ozra L. Murray \$1,400. | Theron Murray \$1,550. | | |
| 1872 | C. Jewell | Ozra L. Murray | Theron Murray | Albert Murray | J. Roat |
| 1883 | W. K. Young \$1,700. | Ozra L. Murray \$3,500. | Albert Murray \$3,800. | Ozra L. Murray \$3,400. | |
| 1885 | W. K. Young | Ozra L. Murray | Albert Murray | Ozra L. Murray | |

| | \$2,000. | \$3,600. | \$3,800. | \$3,500. | |
|------|---------------------------|----------------------------|-----------------------------------|----------------------------|--------------------------|
| | E ½ of NW ¼ | W ½ of SW ¼ | E ½ of SW ¼ | W ½ of SE ¼ | E ½ of W ½ of SE ¼ |
| 1886 | John Young \$2,000. | Ozra L. Murray \$3,600. | Albert Murray \$3,800. | Ozra L. Murray \$3,500. | |
| 1887 | John Young \$2,000. | Ozra L. Murray \$3,600. | Albert Murray \$3,800. | Ozra L. Murray \$3,500. | |
| 1888 | John Young \$1,900. | Ozra L. Murray \$3,500. | Albert Murray Est. \$3,600. | Ozra L. Murray \$3,400. | |
| 1889 | John Young \$1,900. | Ozra L. Murray \$3,500. | Albert Murray Est. \$3,600. | Ozra L. Murray \$3,400. | |
| 1891 | John Youngs \$1,700. | Ozra L. Murray \$3,400. | Albert Murray Est. \$3,400. | Ozra L. Murray \$3,300. | |
| 1892 | John Young \$1,600. | Ozra L. Murray \$3,400. | Albert Murray Est. \$3,400. | Ozra L. Murray \$3,300. | |
| 1893 | John Young \$1,600. | Ozra L. Murray \$3,400. | Albert Murray Est. \$3,400. | Ozra L. Murray \$3,300. | |
| 1894 | John Young \$1,600. | Ozra L. Murray \$3,400. | Albert Murray Est. \$3,400. | Ozra L. Murray \$3,300. | |
| 1895 | John E. Young \$1,600. | Ozra L. Murray \$3,400. | Albert Murray Est. \$3,400. | Ozra L. Murray \$3,300. | |
| 1896 | John Young \$1,600. | Ozra L. Murray \$3,200. | Albert Murray Est. \$3,200. | Ozra L. Murray \$3,000. | |
| 1897 | John Young \$1,600. | Ozra L. Murray \$3,200. | Cetella Murray \$3,200. | Ozra L. Murray \$3,000. | |
| 1898 | John Young \$1,600. | Ozra L. Murray \$3,200. | Cetella Murray \$3,200. | Ozra L. Murray \$1,200. | Henry Murray \$1,200. |
| 1899 | John Young \$1,600. | Ozra L. Murray \$3,200. | Cetella Murray \$3,200. | Ozra L. Murray \$1,200. | Henry Murray \$1,100. |
| 1901 | John Young \$1,600. | Ozra L. Murray \$3,200. | Geo. L. Heliker \$3,100. | Ozra L. Murray \$1,200. | Henry Murray \$1,100. |
| 1902 | John Young \$1,600. | Ozra L. Murray \$3,200. | Geo. L. Heliker \$3,000. | Ozra L. Murray \$1,200. | Henry Murray \$1,100. |
| 1903 | John Young \$2,000. | Ozra L. Murray \$3,700. | Geo. L. Heliker \$3,700. | Ozra L. Murray \$2,000. | Henry Murray \$1,800. |
| 1904 | John Young \$2,200. | S. K. James \$3,600. | Geo. L. Heliker \$3,700. | J. R. Halsted \$2,000. | Henry Murray \$1,800. |
| 1905 | John Young | S. K. James | Geo. L. Heliker | J. R. Halsted | Henry Murray |

| | | | | | |
|------|------------------------|--------------------------|-----------------------------|------------------------|--------------------------|
| | \$2,200. | \$3,500. | \$3,500. | \$2,000. | \$1,800. |
| 1906 | John Young \$2,200. | Chas. Graham \$3,500. | Geo. L. Heliker \$3,500. | H. Halsted \$2,000. | Henry Murray \$1,800. |

Murray family research

From the 1830 Federal Census – Oakland County, Michigan Index:

Reuben Murray 00001001/00200001 (1 free white male 20 – 30, 1 free white male 50 – 60,

2 free white females 10 – 15, 1 free white female 50 – 60)

(Neil’s note: Although this census is not segmented by township, Reuben Murray’s entry is adjacent to other known North Farmington residents. It is very possible that this is Theron’s father, as he is believed to be a Reuben Murray and was said to have resided in Farmington Township according to “The History of Oakland County, Michigan 1817 – 1877”.)

From the www.familysearch.com (LDS) web site:

Name: Theron Murray Father: Reuben Murray Mother: Sabra Doty

From “The First Landowners of Oakland County”:

| Name | Residence | Section | Acres | Date |
|------|-----------|---------|-------|------|
|------|-----------|---------|-------|------|

Town 1 North, Range 9 East – Farmington Township

| | | | | |
|---------------|----------------|---|-------|------------|
| Theron Murray | Farmington, MI | 5 | 79.22 | 07-02-1831 |
|---------------|----------------|---|-------|------------|

From the 1845 Michigan State Census for Oakland County Index:

| | White <u>Males</u> | White <u>Females</u> | Total <u>Whites</u> | Total <u>Inhabitants</u> | White <u>Males Over 21</u> |
|--------------|-----------------------|-------------------------|------------------------|-----------------------------|-------------------------------|
| Theron Murry | 02100 | 00100 | 4 | 4 | Theron Murry |

This translates to - 2 males between 10 and 21 years of age (Ozro & ?)
 1 male between 21 and 45 years of age (Theron)
 1 female between 21 and 45 years of age (Rebecca)

North Farmington Cemetery, Farmington Road, Farmington Township, Oakland County, MI:

| | | | | |
|---------|---------------------------------------|--|--------------------|--------------------|
| Murray, | Theron O. | | b. May 10, 1811 | d. Jan. 22, 1878 |
| | Rebecca E. (Welfare)w/o Theron O. | | b. Jun. 1, 1816 | |
| | Ozro L. (Larue) | | b. Aug. 16, 1834 | d. Apr. 1, 1909 |
| | Henriette D. (Long) w/o O. L. | | b. Mar. 31, 1835 | d. Sept. 30, 1878 |
| | Ellen M. (Lapham) (2nd w/o Ozlo L. 1) | | b. Sept. 28, 1845 | d. Feb. 10, 1905 |
| | Theron S s/o O. L. & H. D. | | b. Nov. 23, 1858 | d. Jan. 27, 1883 |
| | A. A. (Albert A.) (s/o Theron O.) | | b. Apr. 2, 1847 | d. Jan. 26, 1888 |
| | Cetella (w/o Albert A.) | | b. 1854 | d. 1921 |
| | Marlin T. | | b. Oct. 12, 1874 | d. Dec. 3, 1930 |
| | Henry L. (s/o Ozro L. 1) | | b. (Aug. 29,) 1861 | d. (Mar. 9,) 1912 |
| | Mary P. (Darrow) w/o Henry L. | | b. (Nov. 14,) 1860 | d. (Dec. 19,) 1906 |
| | Ozro L. (s/o Henry L.) | | b. (Jan. 21,) 1881 | d. (Nov. 4,) 1915 |
| | Sarah A. (Heliker) (w/o Ozro L. 2) | | b. 1887 | d. 1975 |
| | George Henry s/o O. L. & S. A. | | b. Nov. 28, 1908 | d. Dec. 30, 1908 |
| | Milton J. | | b. 1891 | d. 1963 |
| | Laura V. | | b. 1895 | d. 1983 |

West Farmington Cemetery, Halsted Road, Farmington Township, Oakland County, MI:

Murray, Manerva E. d/o Fred L. & Rachel d. Sept. 13, 1834/17 m.

From the 1850 Federal Census – Michigan Index:

| | | | | |
|----------|---------------------------------------|------|----|------------------|
| Murray, | Theron | OAWB | 54 | (Oakland County, |
| | West Bloomfield Township | | | |
| Winslow, | Henry | OAFA | | 187 |
| | (Oakland County, Farmington Township) | | | |

From a transcription of the 1860 Federal Census – West Bloomfield Township, Oakland County, Michigan:

| | | | | | |
|-----------|-------------|----|--------------|-------------------|---------|
| Murray, | Theron | 49 | farmer | \$8,400/\$1,565NY | |
| | Rebecca | 46 | | | England |
| | Albert | 13 | | | MI |
| | as. | | | | |
| | Agness V. | 16 | domestic | | NY |
| | as. | | | | |
| Nicholas, | David | 28 | farm laborer | | OH |
| | 22-22 (896) | | | | |

| | | | | | |
|-------------|-----------|----|--------|--|----|
| Murray, | Orson | 25 | farmer | | MI |
| | Henrietta | 25 | | | OH |
| | Theron | 1 | | | MI |
| 23-23 (896) | | | | | |

From a transcription of the 1860 Federal Census – Farmington Township, Oakland County, Michigan:

| | | | | | |
|---------|----------|--|--------|--|-------|
| Lapham, | Luther | | farmer | | NY |
| | Deborah | | | | NY... |
| | Ellen M. | | | | |

(Neil's note: Ellen M. Lapham was the 2nd wife of Ozro L. Murray.)

From a transcription of the 1860 Federal Census – Village of Pontiac, Oakland County, Michigan:

| | | | | | |
|----------------------|-------|----|-------|--------|----|
| Boarding House | | | | | |
| Winslow, | Henry | 36 | clerk | /\$200 | NY |
| | Jane | 35 | | | NY |
| | Eliza | 6 | | | MI |
| as. | Ebert | 5 | | | MI |
| as. | C. N. | 2 | | | MI |
| + 12 assorted people | | | | | |

From the www.familysearch.com (LDS) web site:

| | | |
|-------------------------------|--------------------------|---------|
| Name: Theron Sylvester Murray | Father: Ozro Larn Murray | Mother: |
| Henrietta Nicholson | | |

From the 1870 Federal Census – Michigan Index (Volume 9):

| | | | |
|---------|--------|------|------|
| Murray, | Osro | 610R | OAWB |
| Murray, | Theron | 610R | OAWB |

From the Marriage Records of Oakland County:

Murray, Henry L., 17, of West Bloomfield, b. there, farmer, to Mary P. Darrow, 18, of Royal Oak, b. Leslie, at West Bloomfield, 29 Jun 1879, by Rev. A. M. Sowle, Farmington. Wit: A. M. and Mrs. Ida Darrow, both of Royal Oak.

Murray, Ozlo, 44, of North Farmington, b. Farmington, farmer, to Ellen M. Lapham, 33, of Farmington, at Farmington, 3 Jul 1879, by Rev. A. M. Sowle. Wit: Albert A. and Estelle Murray, both of North Farmington.

From the 1886 Pontiac City and Oakland County Directory:

| | | | | |
|------------------|------------|-----------|----------------|-------------------------|
| Murray, Albert | Section 32 | 80 acres | \$3,700. value | Farmington Post Office |
| Murray, O. L. | Section 32 | 160 acres | \$6,900. value | |
| Mooer, Andrew B. | Section 32 | 100 acres | \$3,700. value | Walled Lake Post Office |

YOUNG

From a transcription of the 1860 Federal Census – West Bloomfield Township, Oakland County, Michigan:

| | | | | |
|---------------|----|--------|----|-----|
| Young, Wm. K. | 33 | farmer | PA | |
| Rachael | 25 | | | NY |
| John E. | 2 | | MI | as. |

70-70 (902)

From the 1886 Pontiac City and Oakland County Directory:

| | | | | |
|---------------|------------|-----------|----------------|------------------------------|
| Adams, Reuben | Section 26 | 100 acres | \$3,000. value | |
| Young, Wm. R. | Section 21 | 160 acres | \$3,700. value | North Farmington Post Office |

From Commerce Township Cemeteries listing:

| | | | | |
|----------------------------------|-----------------------|----------------------|------------------|-------------|
| (double stone) Young, Rev. J. J. | | | 1800 - 1876 | |
| | Jerusha, | his wife | | 1795 - 1845 |
| | Young, Amy | w/o Rev. J. J. | (no dates) | |
| | Young, Olive Cordelia | d/o Rev. J. J. & Amy | d. Aug. 18, 1864 | 17y 5m 15d |
| (double stone) Young, W. K. | | | 1827 - 1903 | |
| | Rachel A., | his wife | | 1835 - 1923 |

| | | | |
|------------|----------------|-----------|----------------------|
| (monument) | Young, John E. | “father” | 1857 - 1928 |
| | | Nettie H. | “mother” 1859 - 1894 |
| | | Minnie M. | “mother” 1865 - 1941 |
| (monument) | Young, Clyde | | 1886 - 1927 |

JEWELL

From the 1850 Federal Census – Michigan Index:

| | | | |
|----------------|------|----|--|
| Jewell, Edward | OAWB | 53 | (Oakland County, West Bloomfield Township) |
|----------------|------|----|--|

From a transcription of the 1860 Federal Census – Village of Pontiac, Oakland County, Michigan:

| | | | |
|-----------------|-----------|------------|---------|
| Jewell, C. | 88 | /\$200 | NY |
| | Elizabeth | 42 | NY |
| | Jacob | 64 laborer | NY |
| Toyington, John | 22 | baker | England |
| Sloat, Mack | 30 | clerk | NY |
| 228-228 (636) | | | |

Richardson Cemetery, Commerce Township, Oakland County, MI:

| | | | |
|--------------------|--------|---------------------------|-----------------|
| Jewell, Charles W. | | b. Nov. 26, 1841 | d. Jun. 14, |
| 1901 | | | |
| | Hannah | w/o Charles | b. Mar. 8, 1844 |
| 24, 1924 | | | d. Jan. |
| | Anna | d/o Chas. & Hannah Jewell | |